



# SZABO SCANDIC

Part of Europa Biosite

## Produktinformation



Forschungsprodukte & Biochemikalien



Zellkultur & Verbrauchsmaterial



Diagnostik & molekulare Diagnostik



Laborgeräte & Service

Weitere Information auf den folgenden Seiten!  
See the following pages for more information!



### Lieferung & Zahlungsart

siehe unsere [Liefer- und Versandbedingungen](#)

### Zuschläge

- Mindermengenzuschlag
- Trockeneiszuschlag
- Gefahrgutzuschlag
- Expressversand

### SZABO-SCANDIC HandelsgmbH

Quellenstraße 110, A-1100 Wien

T. +43(0)1 489 3961-0

F. +43(0)1 489 3961-7

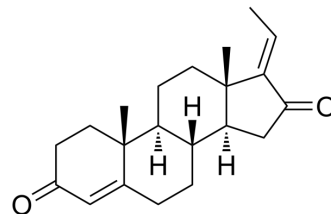
[mail@szabo-scandic.com](mailto:mail@szabo-scandic.com)

[www.szabo-scandic.com](http://www.szabo-scandic.com)

[linkedin.com/company/szaboscandic](https://www.linkedin.com/company/szaboscandic) 

## (-)-(E)-Guggulsterone

Cat. No.:	HY-N7781		
CAS No.:	39025-24-6		
Molecular Formula:	C <sub>21</sub> H <sub>28</sub> O <sub>2</sub>		
Molecular Weight:	312.45		
Target:	Drug Metabolite		
Pathway:	Metabolic Enzyme/Protease		
Storage:	Powder	-20°C	3 years
		4°C	2 years
	In solvent	-80°C	6 months
		-20°C	1 month



### SOLVENT & SOLUBILITY

In Vitro	DMSO : 25 mg/mL (80.01 mM; ultrasonic and warming and heat to 60°C)				
		Solvent Concentration	Mass 1 mg	5 mg	10 mg
	Preparing Stock Solutions	1 mM	3.2005 mL	16.0026 mL	32.0051 mL
		5 mM	0.6401 mL	3.2005 mL	6.4010 mL
10 mM		0.3201 mL	1.6003 mL	3.2005 mL	
Please refer to the solubility information to select the appropriate solvent.					
In Vivo	1. Add each solvent one by one: 10% DMSO >> 90% corn oil Solubility: ≥ 2 mg/mL (6.40 mM); Clear solution				

### BIOLOGICAL ACTIVITY

Description	(-)-(E)-Guggulsterone is the metabolite of Z-guggulsterone. Guggulsterone is an active constituent of guggulipid, an ayurvedic agent derived from Commiphora mukul. Guggulsterone has hypolipidaemic activity <sup>[1]</sup> .
-------------	--

### REFERENCES

[1]. N. VERMA, et al. Pharmacokinetics of Guggulsterone after Intravenous and Oral Administration in Rats.

---

**Caution: Product has not been fully validated for medical applications. For research use only.**

Tel: 609-228-6898

Fax: 609-228-5909

E-mail: [tech@MedChemExpress.com](mailto:tech@MedChemExpress.com)

Address: 1 Deer Park Dr, Suite Q, Monmouth Junction, NJ 08852, USA