



# SZABO SCANDIC

Part of Europa Biosite

## Produktinformation



Forschungsprodukte & Biochemikalien



Zellkultur & Verbrauchsmaterial



Diagnostik & molekulare Diagnostik



Laborgeräte & Service

Weitere Information auf den folgenden Seiten!  
See the following pages for more information!



### Lieferung & Zahlungsart

siehe unsere [Liefer- und Versandbedingungen](#)

### Zuschläge

- Mindermengenzuschlag
- Trockeneiszuschlag
- Gefahrgutzuschlag
- Expressversand

### SZABO-SCANDIC HandelsgmbH

Quellenstraße 110, A-1100 Wien

T. +43(0)1 489 3961-0

F. +43(0)1 489 3961-7

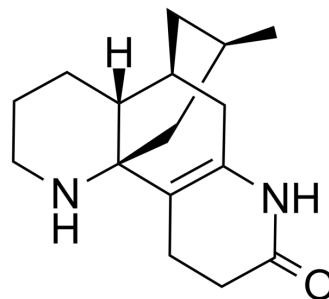
[mail@szabo-scandic.com](mailto:mail@szabo-scandic.com)

[www.szabo-scandic.com](http://www.szabo-scandic.com)

[linkedin.com/company/szaboscandic](https://www.linkedin.com/company/szaboscandic) 

## N-Demethyl- $\alpha$ -obscurine

Cat. No.:	HY-N7785
CAS No.:	34399-44-5
Molecular Formula:	C <sub>16</sub> H <sub>24</sub> N <sub>2</sub> O
Molecular Weight:	260.37
Target:	Others
Pathway:	Others
Storage:	Please store the product under the recommended conditions in the Certificate of Analysis.



### BIOLOGICAL ACTIVITY

<b>Description</b>	N-Demethyl- $\alpha$ -obscurine, a lycodine-type Lycopodium alkaloid, is isolated from Lycopodii Herba <sup>[1]</sup> .
<b>In Vivo</b>	N-Demethyl- $\alpha$ -obscurine exhibits C <sub>max</sub> (35.53 ng/mL), t <sub>1/2</sub> (2.24 h), and AUC <sub>0→t</sub> (156.91 ng•h/mL) following i.g. administration (L. Herba extract; 4.8 g/kg) in rats <sup>[1]</sup> . MCE has not independently confirmed the accuracy of these methods. They are for reference only.

### REFERENCES

[1]. Ma D, et, al. Pharmacokinetic Studies of Three Alkaloids in Rats After Intragastrical Administration of Lycopodii Herba Extract by LC-MS/MS. *Molecules*. 2019 May 19;24(10):1930.

**Caution: Product has not been fully validated for medical applications. For research use only.**

Tel: 609-228-6898

Fax: 609-228-5909

E-mail: tech@MedChemExpress.com

Address: 1 Deer Park Dr, Suite Q, Monmouth Junction, NJ 08852, USA