



# SZABO SCANDIC

Part of Europa Biosite

## Produktinformation



Forschungsprodukte & Biochemikalien



Zellkultur & Verbrauchsmaterial



Diagnostik & molekulare Diagnostik



Laborgeräte & Service

Weitere Information auf den folgenden Seiten!  
See the following pages for more information!



### Lieferung & Zahlungsart

siehe unsere [Liefer- und Versandbedingungen](#)

### Zuschläge

- Mindermengenzuschlag
- Trockeneiszuschlag
- Gefahrgutzuschlag
- Expressversand

### SZABO-SCANDIC HandelsgmbH

Quellenstraße 110, A-1100 Wien

T. +43(0)1 489 3961-0

F. +43(0)1 489 3961-7

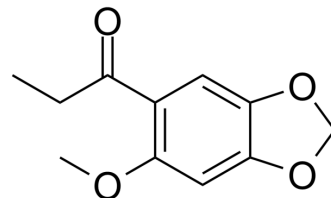
[mail@szabo-scandic.com](mailto:mail@szabo-scandic.com)

[www.szabo-scandic.com](http://www.szabo-scandic.com)

[linkedin.com/company/szaboscandic](https://www.linkedin.com/company/szaboscandic) 

## Methyl kakuol

Cat. No.:	HY-N7965
CAS No.:	70342-29-9
Molecular Formula:	C <sub>11</sub> H <sub>12</sub> O <sub>4</sub>
Molecular Weight:	208.21
Target:	TRP Channel
Pathway:	Membrane Transporter/Ion Channel; Neuronal Signaling
Storage:	Please store the product under the recommended conditions in the Certificate of Analysis.



### BIOLOGICAL ACTIVITY

Description	Methyl kakuol shows agonistic activity against TRPA1 with an EC <sub>50</sub> of 0.27 μM <sup>[1]</sup> .
IC <sub>50</sub> & Target	TRPA1
In Vivo	The maximum concentration (C <sub>max</sub> ) of Methyl kakuol at a dose of 2 g/kg (containing 1156 μg/kg, 294 μg/kg, 452 μg/kg, 852 μg/kg asarinin, sesamin, methyl kakuol, and amide A, respectively) is 98.2 ng/mL <sup>[1]</sup> . MCE has not independently confirmed the accuracy of these methods. They are for reference only.

### REFERENCES

[1]. Takashi Matsumoto, et al. In Vivo Pharmacokinetic Analysis Utilizing Non-Targeted and Targeted Mass Spectrometry and In Vitro Assay against Transient Receptor Potential Channels of Maobushisaishinto and Its Constituent Asiasari Radix. *Molecules*. 2020 Sep 18;25(18):4283.

**Caution: Product has not been fully validated for medical applications. For research use only.**

Tel: 609-228-6898

Fax: 609-228-5909

E-mail: tech@MedChemExpress.com

Address: 1 Deer Park Dr, Suite Q, Monmouth Junction, NJ 08852, USA