



SZABO SCANDIC

Part of Europa Biosite

Produktinformation



Forschungsprodukte & Biochemikalien



Zellkultur & Verbrauchsmaterial



Diagnostik & molekulare Diagnostik



Laborgeräte & Service

Weitere Information auf den folgenden Seiten!
See the following pages for more information!



Lieferung & Zahlungsart

siehe unsere [Liefer- und Versandbedingungen](#)

Zuschläge

- Mindermengenzuschlag
- Trockeneiszuschlag
- Gefahrgutzuschlag
- Expressversand

SZABO-SCANDIC HandelsgmbH

Quellenstraße 110, A-1100 Wien

T. +43(0)1 489 3961-0

F. +43(0)1 489 3961-7

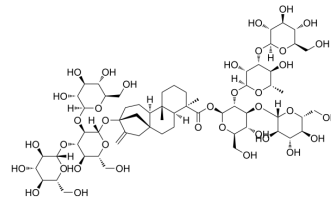
mail@szabo-scandic.com

www.szabo-scandic.com

[linkedin.com/company/szaboscandic](https://www.linkedin.com/company/szaboscandic) 

Rebaudioside O

| | |
|--------------------|--|
| Cat. No.: | HY-N8009 |
| CAS No.: | 1220616-48-7 |
| Molecular Formula: | C ₆₂ H ₁₀₀ O ₃₇ |
| Molecular Weight: | 1437.44 |
| Target: | Others |
| Pathway: | Others |
| Storage: | -20°C, protect from light * In solvent : -80°C, 6 months; -20°C, 1 month (protect from light) |



BIOLOGICAL ACTIVITY

Description

Rebaudioside O is a stevia glycoside that can be isolated from *S. rebaudiana* Morita which was selected from *S. rebaudiana* Bertoni. Rebaudioside O can be used as a sweetener^{[1][2][3]}.

REFERENCES

- [1]. Masaya Ohta, et al. Characterization of novel steviol glycosides from leaves of *Stevia rebaudiana* Morita[J]. *Journal of Applied Glycoscience*, 2010, 57(3): 199-209.
- [2]. Rodenburg D L, et al. Development of HPLC analytical techniques for diterpene glycosides from *Stevia rebaudiana* (Bertoni) Bertoni: Strategies to scale-up[J]. *Journal of the Brazilian Chemical Society*, 2016, 27: 1406-1412.
- [3]. Chaturvedula VS, et al. Isolation, NMR Spectral Analysis and Hydrolysis Studies of a Hepta Pyranosyl Diterpene Glycoside from *Stevia rebaudiana* Bertoni. *Biomolecules*. 2013 Sep 30;3(4):733-40.

Caution: Product has not been fully validated for medical applications. For research use only.

Tel: 609-228-6898

Fax: 609-228-5909

E-mail: tech@MedChemExpress.com

Address: 1 Deer Park Dr, Suite Q, Monmouth Junction, NJ 08852, USA