



SZABO SCANDIC

Part of Europa Biosite

Produktinformation



Forschungsprodukte & Biochemikalien



Zellkultur & Verbrauchsmaterial



Diagnostik & molekulare Diagnostik



Laborgeräte & Service

Weitere Information auf den folgenden Seiten!
See the following pages for more information!



Lieferung & Zahlungsart

siehe unsere [Liefer- und Versandbedingungen](#)

Zuschläge

- Mindermengenzuschlag
- Trockeneiszuschlag
- Gefahrgutzuschlag
- Expressversand

SZABO-SCANDIC HandelsgmbH

Quellenstraße 110, A-1100 Wien

T. +43(0)1 489 3961-0

F. +43(0)1 489 3961-7

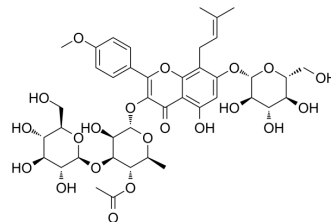
mail@szabo-scandic.com

www.szabo-scandic.com

[linkedin.com/company/szaboscandic](https://www.linkedin.com/company/szaboscandic) 

Korepimedeside C

Cat. No.:	HY-N8086
CAS No.:	205445-00-7
Molecular Formula:	C ₄₁ H ₅₂ O ₂₁
Molecular Weight:	880.84
Target:	Others
Pathway:	Others
Storage:	Please store the product under the recommended conditions in the Certificate of Analysis.



BIOLOGICAL ACTIVITY

Description

Korepimedeside C (Epimedin I), a flavonol glycoside, is isolated from the aerial parts of *Epimedium koreanum* Nakai. *Epimedium koreanum* Nakai is a famous Chinese herbal medicine for the research of impotence, osteoporosis, immune suppression and cardiovascular diseases^{[1][2]}.

REFERENCES

- [1]. Zhao Y, et, al. Effect of drying processes on prenylflavonoid content and antioxidant activity of *Epimedium koreanum* Nakai. *J Food Drug Anal.* 2018 Apr;26(2):796-806.
- [2]. Zheng XX, et, al. Determination of Korepimedeside C in epimedium from different origin by HPLC. *Chemical Engineer.* 2015 Jul.

Caution: Product has not been fully validated for medical applications. For research use only.

Tel: 609-228-6898

Fax: 609-228-5909

E-mail: tech@MedChemExpress.com

Address: 1 Deer Park Dr, Suite Q, Monmouth Junction, NJ 08852, USA