



# SZABO SCANDIC

Part of Europa Biosite

## Produktinformation



Forschungsprodukte & Biochemikalien



Zellkultur & Verbrauchsmaterial



Diagnostik & molekulare Diagnostik



Laborgeräte & Service

Weitere Information auf den folgenden Seiten!  
See the following pages for more information!



### Lieferung & Zahlungsart

siehe unsere [Liefer- und Versandbedingungen](#)

### Zuschläge

- Mindermengenzuschlag
- Trockeneiszuschlag
- Gefahrgutzuschlag
- Expressversand

### SZABO-SCANDIC HandelsgmbH

Quellenstraße 110, A-1100 Wien

T. +43(0)1 489 3961-0

F. +43(0)1 489 3961-7

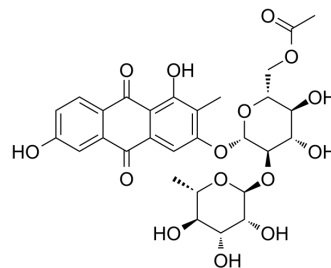
[mail@szabo-scandic.com](mailto:mail@szabo-scandic.com)

[www.szabo-scandic.com](http://www.szabo-scandic.com)

[linkedin.com/company/szaboscandic](https://www.linkedin.com/company/szaboscandic) 

## 2-Methyl-1,3,6-trihydroxy-9,10-anthraquinone-3-O- $\alpha$ -rhamnosyl-(1 $\rightarrow$ 2)- $\beta$ -D-glucoside

Cat. No.:	HY-N8093
CAS No.:	87686-87-1
Molecular Formula:	C <sub>29</sub> H <sub>32</sub> O <sub>15</sub>
Molecular Weight:	620.56
Target:	Others
Pathway:	Others
Storage:	Please store the product under the recommended conditions in the Certificate of Analysis.



### BIOLOGICAL ACTIVITY

<b>Description</b>	2-Methyl-1,3,6-trihydroxy-9,10-anthraquinone-3-O- $\alpha$ -rhamnosyl-(1 $\rightarrow$ 2)- $\beta$ -D-glucoside is a natural product that can be isolated from the roots of <i>Rubia cordifolia</i> <sup>[1]</sup> .
<b>In Vitro</b>	2-Methyl-1,3,6-trihydroxy-9,10-anthraquinone-3-O- $\alpha$ -rhamnosyl-(1 $\rightarrow$ 2)- $\beta$ -D-glucoside (compound 10) does not exhibit inhibitory effects for DNA topoisomerases I and II <sup>[1]</sup> . MCE has not independently confirmed the accuracy of these methods. They are for reference only.

### REFERENCES

[1]. Su-Yang Jeong, et al. Constituents with DNA topoisomerases I and II inhibitory activity and cytotoxicity from the roots of *Rubia cordifolia*. *Planta Med.* 2012 Jan;78(2):177-81.

**Caution: Product has not been fully validated for medical applications. For research use only.**

Tel: 609-228-6898

Fax: 609-228-5909

E-mail: tech@MedChemExpress.com

Address: 1 Deer Park Dr, Suite Q, Monmouth Junction, NJ 08852, USA