



# SZABO SCANDIC

Part of Europa Biosite

## Produktinformation



Forschungsprodukte & Biochemikalien



Zellkultur & Verbrauchsmaterial



Diagnostik & molekulare Diagnostik



Laborgeräte & Service

Weitere Information auf den folgenden Seiten!  
See the following pages for more information!



### Lieferung & Zahlungsart

siehe unsere [Liefer- und Versandbedingungen](#)

### Zuschläge

- Mindermengenzuschlag
- Trockeneiszuschlag
- Gefahrgutzuschlag
- Expressversand

### SZABO-SCANDIC HandelsgmbH

Quellenstraße 110, A-1100 Wien

T. +43(0)1 489 3961-0

F. +43(0)1 489 3961-7

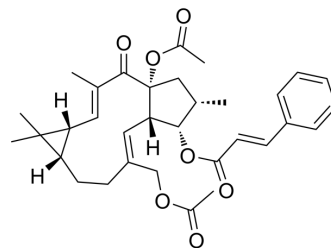
[mail@szabo-scandic.com](mailto:mail@szabo-scandic.com)

[www.szabo-scandic.com](http://www.szabo-scandic.com)

[linkedin.com/company/szaboscandic](https://www.linkedin.com/company/szaboscandic) 

## Euphorbia factor L7a

<b>Cat. No.:</b>	HY-N8121		
<b>CAS No.:</b>	93550-94-8		
<b>Molecular Formula:</b>	C <sub>33</sub> H <sub>40</sub> O <sub>7</sub>		
<b>Molecular Weight:</b>	548.67		
<b>Target:</b>	Others		
<b>Pathway:</b>	Others		
<b>Storage:</b>	Powder	-20°C	3 years
		4°C	2 years
	In solvent	-80°C	6 months
		-20°C	1 month



### SOLVENT & SOLUBILITY

<b>In Vitro</b>	DMSO : 25 mg/mL (45.56 mM; Need ultrasonic)			
		Solvent Concentration	Mass	
			1 mg	5 mg
			10 mg	
<b>Preparing Stock Solutions</b>	<b>1 mM</b>	1.8226 mL	9.1129 mL	18.2259 mL
	<b>5 mM</b>	0.3645 mL	1.8226 mL	3.6452 mL
	<b>10 mM</b>	0.1823 mL	0.9113 mL	1.8226 mL
Please refer to the solubility information to select the appropriate solvent.				
<b>In Vivo</b>	1. Add each solvent one by one: 10% DMSO >> 90% corn oil Solubility: ≥ 2.5 mg/mL (4.56 mM); Clear solution			

### BIOLOGICAL ACTIVITY

<b>Description</b>	Euphorbia factor L7a, a diterpenoid compound, can be isolated from the seeds of Euphorbia lathyris <sup>[1]</sup> .
--------------------	---

### REFERENCES

[1]. Hou XR, et al. Analysis and determination of diterpenoids in unprocessed and processed Euphorbia lathyris seeds by HPLC-ESI-MS. J Pharm Anal. 2011;1(3):197-202.

---

**Caution: Product has not been fully validated for medical applications. For research use only.**

Tel: 609-228-6898

Fax: 609-228-5909

E-mail: [tech@MedChemExpress.com](mailto:tech@MedChemExpress.com)

Address: 1 Deer Park Dr, Suite Q, Monmouth Junction, NJ 08852, USA