



# SZABO SCANDIC

Part of Europa Biosite

## Produktinformation



Forschungsprodukte & Biochemikalien



Zellkultur & Verbrauchsmaterial



Diagnostik & molekulare Diagnostik



Laborgeräte & Service

Weitere Information auf den folgenden Seiten!  
See the following pages for more information!



### Lieferung & Zahlungsart

siehe unsere [Liefer- und Versandbedingungen](#)

### Zuschläge

- Mindermengenzuschlag
- Trockeneiszuschlag
- Gefahrgutzuschlag
- Expressversand

### SZABO-SCANDIC HandelsgmbH

Quellenstraße 110, A-1100 Wien

T. +43(0)1 489 3961-0

F. +43(0)1 489 3961-7

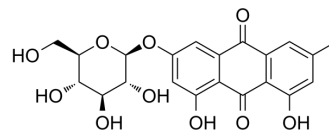
[mail@szabo-scandic.com](mailto:mail@szabo-scandic.com)

[www.szabo-scandic.com](http://www.szabo-scandic.com)

[linkedin.com/company/szaboscandic](https://www.linkedin.com/company/szaboscandic) 

## Emodin 6-O-β-D-glucoside

Cat. No.:	HY-N8126
CAS No.:	34298-85-6
Molecular Formula:	C <sub>21</sub> H <sub>20</sub> O <sub>10</sub>
Molecular Weight:	432.38
Target:	Others
Pathway:	Others
Storage:	4°C, protect from light * In solvent : -80°C, 6 months; -20°C, 1 month (protect from light)



### BIOLOGICAL ACTIVITY

<b>Description</b>	Emodin-6-O-β-D-glucoside (Glucoemodin) is an active compound from Reynoutria japonica. Emodin-6-O-β-D-glucoside shows potent anti-inflammatory and barrier protective effects. Emodin-6-O-β-D-glucoside can be used for the research of diabetic complications and atherosclerosis <sup>[1]</sup> .																
<b>In Vitro</b>	<p>Emodin-6-O-β-D-glucoside (0~20 μM; 24 hours; HUVECs) does not affect cell viability<sup>[1]</sup>.</p> <p>Emodin-6-O-β-D-glucoside (0~10 μM; 6 hours; HUVECs) results in a dose dependent decrease in high glucose-mediated membrane disruption, inhibits high glucose-induced increase expression of VCAM-1, ICAM-1 and E-selectin and results in decreased expression levels of high glucose-induced MCP-1 and IL-8 mRNA<sup>[1]</sup>.</p> <p>Emodin-6-O-β-D-glucoside (10 μM; 6 hours; HUVECs) results in a decrease in the number of THP-1 cells adhering to high glucose-induced HUVECs<sup>[1]</sup>.</p> <p>Emodin-6-O-β-D-glucoside pretreatment significantly inhibits high-glucose-induced ROS formation and p65 NF-κB expression levels increase<sup>[1]</sup>.</p> <p>MCE has not independently confirmed the accuracy of these methods. They are for reference only.</p> <p>Cell Viability Assay<sup>[1]</sup></p> <table border="1"> <tr> <td>Cell Line:</td> <td>HUVECs</td> </tr> <tr> <td>Concentration:</td> <td>0~20 μM</td> </tr> <tr> <td>Incubation Time:</td> <td>24 hours</td> </tr> <tr> <td>Result:</td> <td>Did not affect cell viability.</td> </tr> </table> <p>Western Blot Analysis<sup>[1]</sup></p> <table border="1"> <tr> <td>Cell Line:</td> <td>HUVECs</td> </tr> <tr> <td>Concentration:</td> <td>0~10 μM</td> </tr> <tr> <td>Incubation Time:</td> <td>6 hours</td> </tr> <tr> <td>Result:</td> <td>Inhibited high glucose-induced increase expression of VCAM-1, ICAM-1 and E-selectin.</td> </tr> </table> <p>RT-PCR<sup>[1]</sup></p>	Cell Line:	HUVECs	Concentration:	0~20 μM	Incubation Time:	24 hours	Result:	Did not affect cell viability.	Cell Line:	HUVECs	Concentration:	0~10 μM	Incubation Time:	6 hours	Result:	Inhibited high glucose-induced increase expression of VCAM-1, ICAM-1 and E-selectin.
Cell Line:	HUVECs																
Concentration:	0~20 μM																
Incubation Time:	24 hours																
Result:	Did not affect cell viability.																
Cell Line:	HUVECs																
Concentration:	0~10 μM																
Incubation Time:	6 hours																
Result:	Inhibited high glucose-induced increase expression of VCAM-1, ICAM-1 and E-selectin.																

	Cell Line:	HUVECs
	Concentration:	0~10 $\mu$ M
	Incubation Time:	6 hours
	Result:	Resulted in decreased expression levels of high glucose-induced MCP-1 and IL-8 mRNA.
	Immunofluorescence <sup>[1]</sup>	
	Cell Line:	HUVECs
	Concentration:	10 $\mu$ M
	Incubation Time:	6 hours
	Result:	Resulted in a decrease in the number of THP-1 cells adhering to high glucose-induced HUVECs.
<b>In Vivo</b>	Emodin-6-O- $\beta$ -D-glucoside (0~9 mg/mouse; i.v.) markedly inhibits peritoneal leakage of dye induced by high glucose <sup>[1]</sup> . MCE has not independently confirmed the accuracy of these methods. They are for reference only.	
	Animal Model:	Mouse <sup>[1]</sup>
	Dosage:	0~9 mg/mouse
	Administration:	I.v.
	Result:	Markly inhibited peritoneal leakage of dye induced by high glucose.

## REFERENCES

[1]. Lee W, et al. Emodin-6-O- $\beta$ -D-glucoside inhibits high-glucose-induced vascular inflammation. *Inflammation*. 2014;37(2):306-313.

**Caution: Product has not been fully validated for medical applications. For research use only.**

Tel: 609-228-6898

Fax: 609-228-5909

E-mail: tech@MedChemExpress.com

Address: 1 Deer Park Dr, Suite Q, Monmouth Junction, NJ 08852, USA