



# SZABO SCANDIC

Part of Europa Biosite

## Produktinformation



Forschungsprodukte & Biochemikalien



Zellkultur & Verbrauchsmaterial



Diagnostik & molekulare Diagnostik



Laborgeräte & Service

Weitere Information auf den folgenden Seiten!  
See the following pages for more information!



### Lieferung & Zahlungsart

siehe unsere [Liefer- und Versandbedingungen](#)

### Zuschläge

- Mindermengenzuschlag
- Trockeneiszuschlag
- Gefahrgutzuschlag
- Expressversand

### SZABO-SCANDIC HandelsgmbH

Quellenstraße 110, A-1100 Wien

T. +43(0)1 489 3961-0

F. +43(0)1 489 3961-7

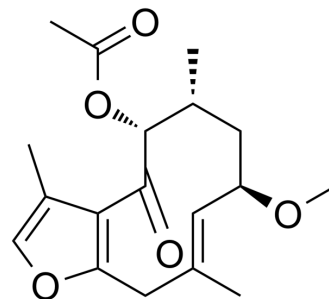
[mail@szabo-scandic.com](mailto:mail@szabo-scandic.com)

[www.szabo-scandic.com](http://www.szabo-scandic.com)

[linkedin.com/company/szaboscandic](https://www.linkedin.com/company/szaboscandic) 

## 2-Methoxy-5-acetoxy-fruranogermacr-1(10)-en-6-one

<b>Cat. No.:</b>	HY-N8134
<b>CAS No.:</b>	1809980-25-3
<b>Molecular Formula:</b>	C <sub>18</sub> H <sub>24</sub> O <sub>5</sub>
<b>Molecular Weight:</b>	320.38
<b>Target:</b>	Dipeptidyl Peptidase
<b>Pathway:</b>	Metabolic Enzyme/Protease
<b>Storage:</b>	Please store the product under the recommended conditions in the Certificate of Analysis.



### BIOLOGICAL ACTIVITY

<b>Description</b>	2-Methoxy-5-acetoxy-fruranogermacr-1(10)-en-6-one is a natural product found in the leaves and stem bark of <i>M. glabra</i> . 2-Methoxy-5-acetoxy-fruranogermacr-1(10)-en-6-one displays binding affinities with dipeptidyl peptidase-4 (DPP-4) and $\alpha$ -Amylase. 2-Methoxy-5-acetoxy-fruranogermacr-1(10)-en-6-one has potential antidiabetic activities <sup>[1]</sup> .
<b>IC<sub>50</sub> &amp; Target</b>	DPP-4 <sup>[1]</sup> , $\alpha$ -Amylase <sup>[1]</sup>

### REFERENCES

[1]. Alexandra Quek, et al. Identification of Dipeptidyl Peptidase-4 and  $\alpha$ -Amylase Inhibitors from *Melicope glabra* (Blume) T. G. Hartley (Rutaceae) Using Liquid Chromatography Tandem Mass Spectrometry, *In Vitro and In Silico Methods*. *Molecules*. 2021 Jan; 26(1): 1.

**Caution: Product has not been fully validated for medical applications. For research use only.**

Tel: 609-228-6898

Fax: 609-228-5909

E-mail: tech@MedChemExpress.com

Address: 1 Deer Park Dr, Suite Q, Monmouth Junction, NJ 08852, USA