



SZABO SCANDIC

Part of Europa Biosite

Produktinformation



Forschungsprodukte & Biochemikalien



Zellkultur & Verbrauchsmaterial



Diagnostik & molekulare Diagnostik



Laborgeräte & Service

Weitere Information auf den folgenden Seiten!
See the following pages for more information!



Lieferung & Zahlungsart

siehe unsere [Liefer- und Versandbedingungen](#)

Zuschläge

- Mindermengenzuschlag
- Trockeneiszuschlag
- Gefahrgutzuschlag
- Expressversand

SZABO-SCANDIC HandelsgmbH

Quellenstraße 110, A-1100 Wien

T. +43(0)1 489 3961-0

F. +43(0)1 489 3961-7

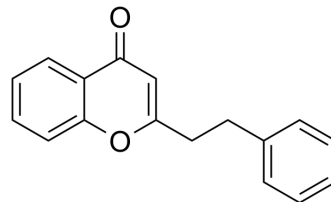
mail@szabo-scandic.com

www.szabo-scandic.com

[linkedin.com/company/szaboscandic](https://www.linkedin.com/company/szaboscandic) 

2-(2-Phenylethyl)chromone

Cat. No.:	HY-N8220
CAS No.:	61828-53-3
Molecular Formula:	C ₁₇ H ₁₄ O ₂
Molecular Weight:	250.29
Target:	Others
Pathway:	Others
Storage:	4°C, protect from light * In solvent : -80°C, 6 months; -20°C, 1 month (protect from light)



SOLVENT & SOLUBILITY

In Vitro	DMSO : 100 mg/mL (399.54 mM; Need ultrasonic)						
	Preparing Stock Solutions	Solvent Concentration	Mass	1 mg	5 mg	10 mg	
				1 mM	3.9954 mL	19.9768 mL	39.9537 mL
				5 mM	0.7991 mL	3.9954 mL	7.9907 mL
				10 mM	0.3995 mL	1.9977 mL	3.9954 mL
Please refer to the solubility information to select the appropriate solvent.							
In Vivo	1. Add each solvent one by one: 10% DMSO >> 40% PEG300 >> 5% Tween-80 >> 45% saline Solubility: ≥ 2.5 mg/mL (9.99 mM); Clear solution						
	2. Add each solvent one by one: 10% DMSO >> 90% (20% SBE-β-CD in saline) Solubility: ≥ 2.5 mg/mL (9.99 mM); Clear solution						
	3. Add each solvent one by one: 10% DMSO >> 90% corn oil Solubility: ≥ 2.5 mg/mL (9.99 mM); Clear solution						

BIOLOGICAL ACTIVITY

Description	2-(2-Phenylethyl)chromone (Flidersiachromone) is one of 2-(2-phenylethyl)chromones that can be found in Chinese eaglewood from <i>Aquilaria sinensis</i> ^[1] .
-------------	---

REFERENCES

[1]. Chun-Ge Li, et al. Antioxidative 2-(2-phenylethyl)chromones in Chinese eaglewood from *Aquilaria sinensis*. *J Asian Nat Prod Res.* 2020 Jul;22(7):639-646.

Caution: Product has not been fully validated for medical applications. For research use only.

Tel: 609-228-6898

Fax: 609-228-5909

E-mail: tech@MedChemExpress.com

Address: 1 Deer Park Dr, Suite Q, Monmouth Junction, NJ 08852, USA