



# SZABO SCANDIC

Part of Europa Biosite

## Produktinformation



Forschungsprodukte & Biochemikalien



Zellkultur & Verbrauchsmaterial



Diagnostik & molekulare Diagnostik



Laborgeräte & Service

Weitere Information auf den folgenden Seiten!  
See the following pages for more information!



### Lieferung & Zahlungsart

siehe unsere [Liefer- und Versandbedingungen](#)

### Zuschläge

- Mindermengenzuschlag
- Trockeneiszuschlag
- Gefahrgutzuschlag
- Expressversand

### SZABO-SCANDIC HandelsgmbH

Quellenstraße 110, A-1100 Wien

T. +43(0)1 489 3961-0

F. +43(0)1 489 3961-7

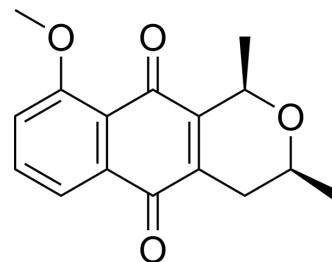
[mail@szabo-scandic.com](mailto:mail@szabo-scandic.com)

[www.szabo-scandic.com](http://www.szabo-scandic.com)

[linkedin.com/company/szaboscandic](https://www.linkedin.com/company/szaboscandic) 

## Eleutherin

<b>Cat. No.:</b>	HY-N8248		
<b>CAS No.:</b>	478-36-4		
<b>Molecular Formula:</b>	C <sub>16</sub> H <sub>16</sub> O <sub>4</sub>		
<b>Molecular Weight:</b>	272.3		
<b>Target:</b>	Topoisomerase		
<b>Pathway:</b>	Cell Cycle/DNA Damage		
<b>Storage:</b>	Powder	-20°C	3 years
		4°C	2 years
	In solvent	-80°C	6 months
		-20°C	1 month



### SOLVENT & SOLUBILITY

<b>In Vitro</b>	DMSO : 16.67 mg/mL (61.22 mM; Need ultrasonic)			
		Solvent Concentration	Mass	
			1 mg	5 mg
			10 mg	
<b>Preparing Stock Solutions</b>	<b>1 mM</b>	3.6724 mL	18.3621 mL	36.7242 mL
	<b>5 mM</b>	0.7345 mL	3.6724 mL	7.3448 mL
	<b>10 mM</b>	0.3672 mL	1.8362 mL	3.6724 mL
Please refer to the solubility information to select the appropriate solvent.				
<b>In Vivo</b>	1. Add each solvent one by one: 10% DMSO >> 40% PEG300 >> 5% Tween-80 >> 45% saline Solubility: ≥ 1.67 mg/mL (6.13 mM); Clear solution			

### BIOLOGICAL ACTIVITY

<b>Description</b>	Eleutherin is a type of naphthoquinone derivative with the protective effect against the injury of human umbilical vein endothelial cells (HUVECs), which can be isolated from the edible bulbs of <i>Eleutherine americana</i> (Hong-Cong) <sup>[1]</sup> .
<b>In Vitro</b>	Eleutherin inhibits topoisomerase II by inducing religation and dissociation of the enzyme from DNA in the presence of ATP [1]. MCE has not independently confirmed the accuracy of these methods. They are for reference only.

### REFERENCES

[1]. Chen D, et al. New naphthoquinones derivatives from the edible bulbs of *Eleutherine americana* and their protective effect on the injury of human umbilical vein endothelial cells. *Fitoterapia*. 2019 Jan;132:46-52.

---

[2]. Castro ALG, et, al. Evaluation of the genotoxicity and mutagenicity of isoeleutherin and eleutherin isolated from Eleutherine plicata herb. using bioassays and in silico approaches. Arabian Journal of Chemistry. Volume 14, Issue 4, April 2021, 103084.

[3]. Krishnan P, et, al. Novel mechanisms of DNA topoisomerase II inhibition by pyranonaphthoquinone derivatives-eleutherin, alpha lapachone, and beta lapachone. Biochem Pharmacol. 2000 Nov 1;60(9):1367-79.

---

**Caution: Product has not been fully validated for medical applications. For research use only.**

Tel: 609-228-6898

Fax: 609-228-5909

E-mail: [tech@MedChemExpress.com](mailto:tech@MedChemExpress.com)

Address: 1 Deer Park Dr, Suite Q, Monmouth Junction, NJ 08852, USA