



SZABO SCANDIC

Part of Europa Biosite

Produktinformation



Forschungsprodukte & Biochemikalien



Zellkultur & Verbrauchsmaterial



Diagnostik & molekulare Diagnostik



Laborgeräte & Service

Weitere Information auf den folgenden Seiten!
See the following pages for more information!



Lieferung & Zahlungsart

siehe unsere [Liefer- und Versandbedingungen](#)

Zuschläge

- Mindermengenzuschlag
- Trockeneiszuschlag
- Gefahrgutzuschlag
- Expressversand

SZABO-SCANDIC HandelsgmbH

Quellenstraße 110, A-1100 Wien

T. +43(0)1 489 3961-0

F. +43(0)1 489 3961-7

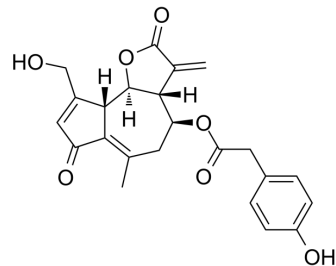
mail@szabo-scandic.com

www.szabo-scandic.com

[linkedin.com/company/szaboscandic](https://www.linkedin.com/company/szaboscandic) 

Lactupicrin

| | |
|--------------------|--|
| Cat. No.: | HY-N8290 |
| CAS No.: | 65725-11-3 |
| Molecular Formula: | C ₂₃ H ₂₂ O ₇ |
| Molecular Weight: | 410.42 |
| Target: | Others |
| Pathway: | Others |
| Storage: | 4°C, protect from light * In solvent : -80°C, 6 months; -20°C, 1 month (protect from light) |



SOLVENT & SOLUBILITY

In Vitro

DMSO : 250 mg/mL (609.13 mM; Need ultrasonic)

| Concentration | Solvent | Mass | | |
|---------------------------|---------|-----------|------------|------------|
| | | 1 mg | 5 mg | 10 mg |
| Preparing Stock Solutions | 1 mM | 2.4365 mL | 12.1826 mL | 24.3653 mL |
| | 5 mM | 0.4873 mL | 2.4365 mL | 4.8731 mL |
| | 10 mM | 0.2437 mL | 1.2183 mL | 2.4365 mL |

Please refer to the solubility information to select the appropriate solvent.

BIOLOGICAL ACTIVITY

Description

Lactupicrin (Lactucopicrin) is a characteristic bitter sesquiterpene lactone that can relieve pain. Lactupicrin exhibits atheroprotective effect^{[1][2]}.

REFERENCES

- [1]. Wesołowska A, et, al. Analgesic and sedative activities of lactucin and some lactucin-like guaianolides in mice. *J Ethnopharmacol.* 2006 Sep 19;107(2):254-8.
- [2]. Li Q, et, al. Terpene Lactucopicrin Limits Macrophage Foam Cell Formation by a Reduction of Lectin-Like Oxidized Low-Density Lipoprotein Receptor-1 in Lipid Rafts. *Mol Nutr Food Res.* 2022 Feb;66(4):e2100905.

Caution: Product has not been fully validated for medical applications. For research use only.

Tel: 609-228-6898

Fax: 609-228-5909

E-mail: tech@MedChemExpress.com

Address: 1 Deer Park Dr, Suite Q, Monmouth Junction, NJ 08852, USA