



# SZABO SCANDIC

Part of Europa Biosite

## Produktinformation



Forschungsprodukte & Biochemikalien



Zellkultur & Verbrauchsmaterial



Diagnostik & molekulare Diagnostik



Laborgeräte & Service

Weitere Information auf den folgenden Seiten!  
See the following pages for more information!



### Lieferung & Zahlungsart

siehe unsere [Liefer- und Versandbedingungen](#)

### Zuschläge

- Mindermengenzuschlag
- Trockeneiszuschlag
- Gefahrgutzuschlag
- Expressversand

### SZABO-SCANDIC HandelsgmbH

Quellenstraße 110, A-1100 Wien

T. +43(0)1 489 3961-0

F. +43(0)1 489 3961-7

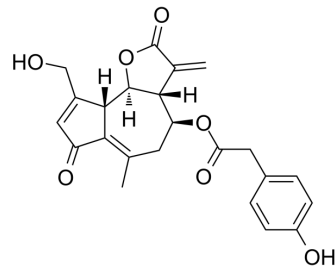
[mail@szabo-scandic.com](mailto:mail@szabo-scandic.com)

[www.szabo-scandic.com](http://www.szabo-scandic.com)

[linkedin.com/company/szaboscandic](https://www.linkedin.com/company/szaboscandic) 

## Lactupicrin

Cat. No.:	HY-N8290
CAS No.:	65725-11-3
Molecular Formula:	C <sub>23</sub> H <sub>22</sub> O <sub>7</sub>
Molecular Weight:	410.42
Target:	Others
Pathway:	Others
Storage:	4°C, protect from light * In solvent : -80°C, 6 months; -20°C, 1 month (protect from light)



### SOLVENT & SOLUBILITY

#### In Vitro

DMSO : 250 mg/mL (609.13 mM; Need ultrasonic)

Concentration	Mass			
	1 mg	5 mg	10 mg	
1 mM	2.4365 mL	12.1826 mL	24.3653 mL	
5 mM	0.4873 mL	2.4365 mL	4.8731 mL	
10 mM	0.2437 mL	1.2183 mL	2.4365 mL	

Please refer to the solubility information to select the appropriate solvent.

### BIOLOGICAL ACTIVITY

#### Description

Lactupicrin (Lactucopicrin) is a characteristic bitter sesquiterpene lactone that can relieve pain. Lactupicrin exhibits atheroprotective effect<sup>[1][2]</sup>.

### REFERENCES

- [1]. Wesołowska A, et, al. Analgesic and sedative activities of lactucin and some lactucin-like guaianolides in mice. *J Ethnopharmacol.* 2006 Sep 19;107(2):254-8.
- [2]. Li Q, et, al. Terpene Lactucopicrin Limits Macrophage Foam Cell Formation by a Reduction of Lectin-Like Oxidized Low-Density Lipoprotein Receptor-1 in Lipid Rafts. *Mol Nutr Food Res.* 2022 Feb;66(4):e2100905.

---

**Caution: Product has not been fully validated for medical applications. For research use only.**

Tel: 609-228-6898

Fax: 609-228-5909

E-mail: [tech@MedChemExpress.com](mailto:tech@MedChemExpress.com)

Address: 1 Deer Park Dr, Suite Q, Monmouth Junction, NJ 08852, USA