



# SZABO SCANDIC

Part of Europa Biosite

## Produktinformation



Forschungsprodukte & Biochemikalien



Zellkultur & Verbrauchsmaterial



Diagnostik & molekulare Diagnostik



Laborgeräte & Service

Weitere Information auf den folgenden Seiten!  
See the following pages for more information!



### Lieferung & Zahlungsart

siehe unsere [Liefer- und Versandbedingungen](#)

### Zuschläge

- Mindermengenzuschlag
- Trockeneiszuschlag
- Gefahrgutzuschlag
- Expressversand

### SZABO-SCANDIC HandelsgmbH

Quellenstraße 110, A-1100 Wien

T. +43(0)1 489 3961-0

F. +43(0)1 489 3961-7

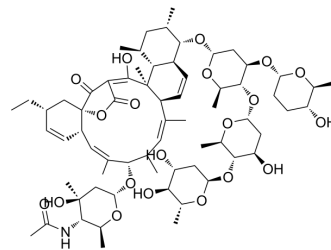
[mail@szabo-scandic.com](mailto:mail@szabo-scandic.com)

[www.szabo-scandic.com](http://www.szabo-scandic.com)

[linkedin.com/company/szaboscandic](https://www.linkedin.com/company/szaboscandic) 

## Saccharocarcin A

Cat. No.:	HY-N8296
CAS No.:	158475-32-2
Molecular Formula:	C <sub>67</sub> H <sub>101</sub> NO <sub>20</sub>
Molecular Weight:	1240.51
Target:	Bacterial
Pathway:	Anti-infection
Storage:	Please store the product under the recommended conditions in the Certificate of Analysis.



### BIOLOGICAL ACTIVITY

#### Description

Saccharocarcin A is an antibiotic originally isolated from *S. aerocolonigenes* subsp. *antibiotica*. It is active against *M. luteus*, *S. aureus*, *E. coli*, *P. aeruginosa*, and *C. albicans* in a disc assay. Saccharocarcin A inhibits *C. trachomatis* infection by 88% without inducing cytotoxicity in McCoy cells when used at a concentration of 0.5 µg/mL.

### REFERENCES

[1]. Horan, et al. A family of novel macrocyclic lactones, the saccharocarcons produced by *Saccharothrix aerocolonigenes* subsp. *antibiotica*. I. Taxonomy, fermentation, isolation and biological properties. *J. Antibiot. (Tokyo)* 50(2), 119-125 (1997).

**Caution: Product has not been fully validated for medical applications. For research use only.**

Tel: 609-228-6898

Fax: 609-228-5909

E-mail: [tech@MedChemExpress.com](mailto:tech@MedChemExpress.com)

Address: 1 Deer Park Dr, Suite Q, Monmouth Junction, NJ 08852, USA