



# SZABO SCANDIC

Part of Europa Biosite

## Produktinformation



Forschungsprodukte & Biochemikalien



Zellkultur & Verbrauchsmaterial



Diagnostik & molekulare Diagnostik



Laborgeräte & Service

Weitere Information auf den folgenden Seiten!  
See the following pages for more information!



### Lieferung & Zahlungsart

siehe unsere [Liefer- und Versandbedingungen](#)

### Zuschläge

- Mindermengenzuschlag
- Trockeneiszuschlag
- Gefahrgutzuschlag
- Expressversand

### SZABO-SCANDIC HandelsgmbH

Quellenstraße 110, A-1100 Wien

T. +43(0)1 489 3961-0

F. +43(0)1 489 3961-7

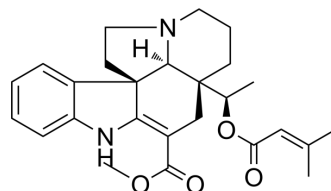
[mail@szabo-scandic.com](mailto:mail@szabo-scandic.com)

[www.szabo-scandic.com](http://www.szabo-scandic.com)

[linkedin.com/company/szaboscandic](https://www.linkedin.com/company/szaboscandic) 

## Echitovenidine

Cat. No.:	HY-N8315
CAS No.:	7222-35-7
Molecular Formula:	C <sub>26</sub> H <sub>32</sub> N <sub>2</sub> O <sub>4</sub>
Molecular Weight:	436.54
Target:	Monoamine Oxidase
Pathway:	Neuronal Signaling
Storage:	Please store the product under the recommended conditions in the Certificate of Analysis.



### BIOLOGICAL ACTIVITY

<b>Description</b>	Echitovenidine is an alkaloid that can be isolated from <i>Alstonia yunnanensis</i> . Echitovenidine is an inhibitor of monoamine oxidase (MAO) <sup>[1]</sup> .
<b>In Vivo</b>	Echitovenidine (50 mg/kg, IP) significantly potentiates the analgesic effect of a subanalgesic dose of morphine <sup>[1]</sup> . The LD <sub>50</sub> of Echitovenidine in mice was 126 ± 23 mg/kg (IP) <sup>[1]</sup> . Echitovenidine produces a transient depressor response in anaesthetised dog, with no significant effect on respiration, in dose of 10 mg/kg <sup>[1]</sup> . MCE has not independently confirmed the accuracy of these methods. They are for reference only.

### REFERENCES

[1]. Bhattacharya SK, et al. Psychopharmacological studies on echitovenidine. *Pharmacol Res Commun*. 1976 Apr;8(2):159-66.

**Caution: Product has not been fully validated for medical applications. For research use only.**

Tel: 609-228-6898

Fax: 609-228-5909

E-mail: tech@MedChemExpress.com

Address: 1 Deer Park Dr, Suite Q, Monmouth Junction, NJ 08852, USA