



SZABO SCANDIC

Part of Europa Biosite

Produktinformation



Forschungsprodukte & Biochemikalien



Zellkultur & Verbrauchsmaterial



Diagnostik & molekulare Diagnostik



Laborgeräte & Service

Weitere Information auf den folgenden Seiten!
See the following pages for more information!



Lieferung & Zahlungsart

siehe unsere [Liefer- und Versandbedingungen](#)

Zuschläge

- Mindermengenzuschlag
- Trockeneiszuschlag
- Gefahrgutzuschlag
- Expressversand

SZABO-SCANDIC HandelsgmbH

Quellenstraße 110, A-1100 Wien

T. +43(0)1 489 3961-0

F. +43(0)1 489 3961-7

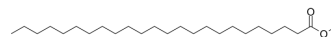
mail@szabo-scandic.com

www.szabo-scandic.com

[linkedin.com/company/szaboscandic](https://www.linkedin.com/company/szaboscandic) 

Methyl tetracosanoate

Cat. No.:	HY-N8438		
CAS No.:	2442-49-1		
Molecular Formula:	C ₂₅ H ₅₀ O ₂		
Molecular Weight:	382.66		
Target:	Others		
Pathway:	Others		
Storage:	Powder	-20°C	3 years
		4°C	2 years
	In solvent	-80°C	6 months
		-20°C	1 month



SOLVENT & SOLUBILITY

In Vitro

Ethanol : 3.7 mg/mL (9.67 mM; ultrasonic and warming and heat to 60°C)

Preparing Stock Solutions	Solvent Concentration	Mass		
		1 mg	5 mg	10 mg
	1 mM	2.6133 mL	13.0664 mL	26.1329 mL
	5 mM	0.5227 mL	2.6133 mL	5.2266 mL
	10 mM	---	---	---

Please refer to the solubility information to select the appropriate solvent.

BIOLOGICAL ACTIVITY

Description

Methyl tetracosanoate (Methyl lignocerate) is a fatty acid methyl ester with anti-diabetic activity^[1].

In Vitro

Methyl tetracosanoate (1 ng/mL-10 µg/mL; 24 h) increases glucose uptake on differentiated 3T3-L1 adipocytes^[1].

Methyl tetracosanoate (1 ng/mL; 18 h) elevates the GLUT4 mRNA expression^[1].

MCE has not independently confirmed the accuracy of these methods. They are for reference only.

Western Blot Analysis^[1]

Cell Line:	3T3-L1 adipocytes
Concentration:	1 ng/mL
Incubation Time:	24 h
Result:	Showed phosphorylation of IRβ and PI3K on par with positive control insulin.

REFERENCES

[1]. Shilpa K, et al. Probing key targets in insulin signaling and adipogenesis using a methanolic extract of *Costus pictus* and its bioactive molecule, methyl tetracosanoate. *Biotechnol Lett.* 2009 Dec;31(12):1837-41.

Caution: Product has not been fully validated for medical applications. For research use only.

Tel: 609-228-6898

Fax: 609-228-5909

E-mail: tech@MedChemExpress.com

Address: 1 Deer Park Dr, Suite Q, Monmouth Junction, NJ 08852, USA