



SZABO SCANDIC

Part of Europa Biosite

Produktinformation



Forschungsprodukte & Biochemikalien



Zellkultur & Verbrauchsmaterial



Diagnostik & molekulare Diagnostik



Laborgeräte & Service

Weitere Information auf den folgenden Seiten!
See the following pages for more information!



Lieferung & Zahlungsart

siehe unsere [Liefer- und Versandbedingungen](#)

Zuschläge

- Mindermengenzuschlag
- Trockeneiszuschlag
- Gefahrgutzuschlag
- Expressversand

SZABO-SCANDIC HandelsgmbH

Quellenstraße 110, A-1100 Wien

T. +43(0)1 489 3961-0

F. +43(0)1 489 3961-7

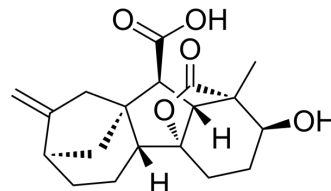
mail@szabo-scandic.com

www.szabo-scandic.com

[linkedin.com/company/szaboscandic](https://www.linkedin.com/company/szaboscandic) 

Gibberellin A4

Cat. No.:	HY-N8440
CAS No.:	468-44-0
Molecular Formula:	C ₁₉ H ₂₄ O ₅
Molecular Weight:	332.39
Target:	Others
Pathway:	Others
Storage:	4°C, protect from light * In solvent : -80°C, 6 months; -20°C, 1 month (protect from light)



SOLVENT & SOLUBILITY

In Vitro	DMSO : 100 mg/mL (300.85 mM; Need ultrasonic)						
	Preparing Stock Solutions	Solvent Concentration	Mass	1 mg	5 mg	10 mg	
				1 mM	3.0085 mL	15.0426 mL	30.0851 mL
				5 mM	0.6017 mL	3.0085 mL	6.0170 mL
				10 mM	0.3009 mL	1.5043 mL	3.0085 mL
Please refer to the solubility information to select the appropriate solvent.							
In Vivo	1. Add each solvent one by one: 10% DMSO >> 40% PEG300 >> 5% Tween-80 >> 45% saline Solubility: ≥ 2.5 mg/mL (7.52 mM); Clear solution						
	2. Add each solvent one by one: 10% DMSO >> 90% (20% SBE-β-CD in saline) Solubility: ≥ 2.5 mg/mL (7.52 mM); Clear solution						
	3. Add each solvent one by one: 10% DMSO >> 90% corn oil Solubility: ≥ 2.5 mg/mL (7.52 mM); Clear solution						

BIOLOGICAL ACTIVITY

Description	Gibberellin A4 is a natural compound that can be isolated from <i>Sphaceloma manihoticola</i> . Gibberellin A4 is a causal agent of cassava superelongation disease ^[1] .
-------------	--

REFERENCES

[1]. Rademacher W, Graebe JE. Gibberellin A4 produced by *Sphaceloma manihoticola*, the cause of the superelongation disease of cassava (*Manihot esculenta*). *Biochem Biophys Res Commun*. 1979 Nov 14;91(1):35-40.

Caution: Product has not been fully validated for medical applications. For research use only.

Tel: 609-228-6898

Fax: 609-228-5909

E-mail: tech@MedChemExpress.com

Address: 1 Deer Park Dr, Suite Q, Monmouth Junction, NJ 08852, USA