



# SZABO SCANDIC

Part of Europa Biosite

## Produktinformation



Forschungsprodukte & Biochemikalien



Zellkultur & Verbrauchsmaterial



Diagnostik & molekulare Diagnostik



Laborgeräte & Service

Weitere Information auf den folgenden Seiten!  
See the following pages for more information!



### Lieferung & Zahlungsart

siehe unsere [Liefer- und Versandbedingungen](#)

### Zuschläge

- Mindermengenzuschlag
- Trockeneiszuschlag
- Gefahrgutzuschlag
- Expressversand

### SZABO-SCANDIC HandelsgmbH

Quellenstraße 110, A-1100 Wien

T. +43(0)1 489 3961-0

F. +43(0)1 489 3961-7

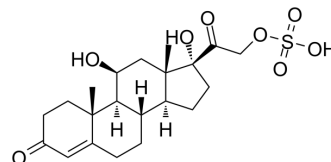
[mail@szabo-scandic.com](mailto:mail@szabo-scandic.com)

[www.szabo-scandic.com](http://www.szabo-scandic.com)

[linkedin.com/company/szaboscandic](https://www.linkedin.com/company/szaboscandic) 

## Cortisol sulfate

<b>Cat. No.:</b>	HY-N8460
<b>CAS No.:</b>	1253-43-6
<b>Molecular Formula:</b>	C <sub>21</sub> H <sub>30</sub> O <sub>8</sub> S
<b>Molecular Weight:</b>	442.52
<b>Target:</b>	Endogenous Metabolite
<b>Pathway:</b>	Metabolic Enzyme/Protease
<b>Storage:</b>	Please store the product under the recommended conditions in the Certificate of Analysis.



### BIOLOGICAL ACTIVITY

<b>Description</b>	Cortisol sulfate (Cortisol 21-sulfate) is a metabolite of Cortisol (HY-N0583). Cortisol sulfate is a specific ligand for intracellular transcortin <sup>[1][2][3]</sup> .	
<b>In Vivo</b>	Cortisol sulfate (3 mg; i.m.; every other day; for 2-7 weeks) affects behavior through its direct action on the central nervous system <sup>[4]</sup> . MCE has not independently confirmed the accuracy of these methods. They are for reference only.	
	<b>Animal Model:</b>	Male Wistar-King rats <sup>[4]</sup>
	<b>Dosage:</b>	3 mg
	<b>Administration:</b>	Intramuscular injection, every other day, for 2-7 weeks
	<b>Result:</b>	Had significant stimulatory effects on the animal's exploratory behaviors (ambulation and rearing), when the treatments were started soon after weaning (postnatal day 21-24).

### REFERENCES

- [1]. C S Hall, et al. Simultaneous metabolism of cortisol sulfate and cortisol in normal human adults. *J Clin Endocrinol Metab.* 1970 Oct;31(4):439-44.
- [2]. S S Singer, et al. Enzymatic sulfation of steroids. I. The enzymatic basis for the sex difference in cortisol sulfation by rat liver preparations. *Endocrinology.* 1976 Apr;98(4):963-74.
- [3]. T Hayashi, et al. Cortisol-21-sulfate (FS) is a specific ligand for intracellular transcortin: demonstration of three types of high affinity corticosteroid binders in bovine aortic cytosol by a combined use of FS and RU 28362. *Endocrinology.* 1990 Jan;126(1):307-16.
- [4]. S Miyabo, et al. Behavioral and other systemic effects of cortisol-21 sulfate. *Horm Behav.* 1972 Sep;3(3):227-36.

---

**Caution: Product has not been fully validated for medical applications. For research use only.**

Tel: 609-228-6898

Fax: 609-228-5909

E-mail: [tech@MedChemExpress.com](mailto:tech@MedChemExpress.com)

Address: 1 Deer Park Dr, Suite Q, Monmouth Junction, NJ 08852, USA