



SZABO SCANDIC

Part of Europa Biosite

Produktinformation



Forschungsprodukte & Biochemikalien



Zellkultur & Verbrauchsmaterial



Diagnostik & molekulare Diagnostik



Laborgeräte & Service

Weitere Information auf den folgenden Seiten!
See the following pages for more information!



Lieferung & Zahlungsart

siehe unsere [Liefer- und Versandbedingungen](#)

Zuschläge

- Mindermengenzuschlag
- Trockeneiszuschlag
- Gefahrgutzuschlag
- Expressversand

SZABO-SCANDIC HandelsgmbH

Quellenstraße 110, A-1100 Wien

T. +43(0)1 489 3961-0

F. +43(0)1 489 3961-7

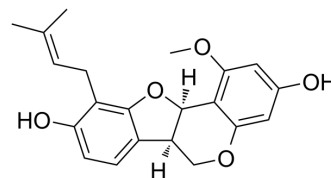
mail@szabo-scandic.com

www.szabo-scandic.com

[linkedin.com/company/szaboscandic](https://www.linkedin.com/company/szaboscandic) 

1-Methoxyphaseollidin

Cat. No.:	HY-N8489
CAS No.:	65428-13-9
Molecular Formula:	C ₂₁ H ₂₂ O ₅
Molecular Weight:	354.4
Target:	Endogenous Metabolite; Bacterial
Pathway:	Metabolic Enzyme/Protease; Anti-infection
Storage:	Please store the product under the recommended conditions in the Certificate of Analysis.



BIOLOGICAL ACTIVITY

Description	1-Methoxyphaseollidin, a flavonoid compound, is a lysoPAF acetyltransferase inhibitor, with an IC ₅₀ of 48 μM. 1-Methoxyphaseollidin exhibits anti-H.pylori activity against the CLAR and AMOX-resistant strain as well as four CLAR (AMOX)-sensitive strains ^{[1][2][3]} .
IC ₅₀ & Target	Human Endogenous Metabolite

REFERENCES

- [1]. Fukai T, et, al. Anti-Helicobacter pylori flavonoids from licorice extract. Life Sci. 2002 Aug 9;71(12):1449-63.
- [2]. Nagumo S, et, al. Inhibition of lysoPAF acetyltransferase activity by components of licorice root. Biol Pharm Bull. 1999 Oct;22(10):1144-6.
- [3]. Sinha SK, et, al. Potential Leads from Liquorice Against SARS-CoV-2 Main Protease using Molecular Docking Simulation Studies. Comb Chem High Throughput Screen. 2021;24(4):591-597.

Caution: Product has not been fully validated for medical applications. For research use only.

Tel: 609-228-6898

Fax: 609-228-5909

E-mail: tech@MedChemExpress.com

Address: 1 Deer Park Dr, Suite Q, Monmouth Junction, NJ 08852, USA