



SZABO SCANDIC

Part of Europa Biosite

Produktinformation



Forschungsprodukte & Biochemikalien



Zellkultur & Verbrauchsmaterial



Diagnostik & molekulare Diagnostik



Laborgeräte & Service

Weitere Information auf den folgenden Seiten!
See the following pages for more information!



Lieferung & Zahlungsart

siehe unsere [Liefer- und Versandbedingungen](#)

Zuschläge

- Mindermengenzuschlag
- Trockeneiszuschlag
- Gefahrgutzuschlag
- Expressversand

SZABO-SCANDIC HandelsgmbH

Quellenstraße 110, A-1100 Wien

T. +43(0)1 489 3961-0

F. +43(0)1 489 3961-7

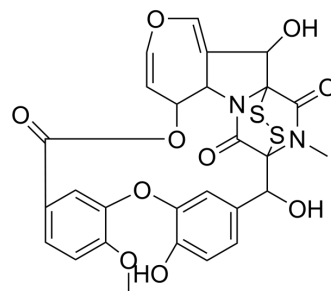
mail@szabo-scandic.com

www.szabo-scandic.com

[linkedin.com/company/szaboscandic](https://www.linkedin.com/company/szaboscandic) 

Emestrin

Cat. No.:	HY-N8501
CAS No.:	97816-62-1
Molecular Formula:	C ₂₇ H ₂₂ N ₂ O ₁₀ S ₂
Molecular Weight:	598.6
Target:	Others
Pathway:	Others
Storage:	Please store the product under the recommended conditions in the Certificate of Analysis.



BIOLOGICAL ACTIVITY

Description

Emestrin is a mycotoxin originally isolated from *E. striata* that has antimicrobial, immunomodulatory, and cytotoxic activities. It is active against the fungi *C. albicans* and *C. neoformans*, as well as the bacteria *E. coli*, *S. aureus*, and methicillin-resistant *S. aureus* (MRSA; IC₅₀s=3.94, 0.6, 2.21, 4.55, and 2.21 μg/mL, respectively).² Emestrin is a chemokine (C-C motif) receptor 2 (CCR2) antagonist (IC₅₀=5.4 μM in a radioligand binding assay using isolated human monocytes).³ Emestrin (0.1 μg/mL) induces apoptosis in HL-60 cells. It induces heart, thymus, and liver tissue necrosis in mice when administered at doses ranging from 18 to 30 mg/kg.

REFERENCES

[1]. Seya, et al. Structure and absolute configuration of emestrin, a new macrocyclic epidithiodioxopiperazine from *Emericella striata*. *J. Chem. Soc. Chem. Commun.* 10, 657-658 (1985).

Caution: Product has not been fully validated for medical applications. For research use only.

Tel: 609-228-6898

Fax: 609-228-5909

E-mail: tech@MedChemExpress.com

Address: 1 Deer Park Dr, Suite Q, Monmouth Junction, NJ 08852, USA