



# SZABO SCANDIC

Part of Europa Biosite

## Produktinformation



Forschungsprodukte & Biochemikalien



Zellkultur & Verbrauchsmaterial



Diagnostik & molekulare Diagnostik



Laborgeräte & Service

Weitere Information auf den folgenden Seiten!  
See the following pages for more information!



### Lieferung & Zahlungsart

siehe unsere [Liefer- und Versandbedingungen](#)

### Zuschläge

- Mindermengenzuschlag
- Trockeneiszuschlag
- Gefahrgutzuschlag
- Expressversand

### SZABO-SCANDIC HandelsgmbH

Quellenstraße 110, A-1100 Wien

T. +43(0)1 489 3961-0

F. +43(0)1 489 3961-7

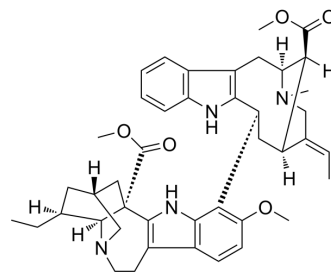
[mail@szabo-scandic.com](mailto:mail@szabo-scandic.com)

[www.szabo-scandic.com](http://www.szabo-scandic.com)

[linkedin.com/company/szaboscandic](https://www.linkedin.com/company/szaboscandic) 

## Conodurine

Cat. No.:	HY-N8530
CAS No.:	2665-57-8
Molecular Formula:	C <sub>43</sub> H <sub>52</sub> N <sub>4</sub> O <sub>5</sub>
Molecular Weight:	704.9
Target:	Others
Pathway:	Others
Storage:	Please store the product under the recommended conditions in the Certificate of Analysis.



### BIOLOGICAL ACTIVITY

#### Description

Conodurine is a monoterpenoid indole alkaloid. Conodurine can inhibit lysosomal acidification. Conodurine is isolated from the natural *Tabernaemontana corymbosa*<sup>[1]</sup>.

### REFERENCES

[1]. Zhang Y, Ding X, Yuan YX, Guo LL, Hao XJ. Cytotoxic Monoterpenoid Indole Alkaloids from *Tabernaemontana corymbosa* as Potent Autophagy Inhibitors by the Attenuation of Lysosomal Acidification. *J Nat Prod.* 2020 May 22;83(5):1432-1439.

**Caution: Product has not been fully validated for medical applications. For research use only.**

Tel: 609-228-6898

Fax: 609-228-5909

E-mail: tech@MedChemExpress.com

Address: 1 Deer Park Dr, Suite Q, Monmouth Junction, NJ 08852, USA