



SZABO SCANDIC

Part of Europa Biosite

Produktinformation



Forschungsprodukte & Biochemikalien



Zellkultur & Verbrauchsmaterial



Diagnostik & molekulare Diagnostik



Laborgeräte & Service

Weitere Information auf den folgenden Seiten!
See the following pages for more information!



Lieferung & Zahlungsart

siehe unsere [Liefer- und Versandbedingungen](#)

Zuschläge

- Mindermengenzuschlag
- Trockeneiszuschlag
- Gefahrgutzuschlag
- Expressversand

SZABO-SCANDIC HandelsgmbH

Quellenstraße 110, A-1100 Wien

T. +43(0)1 489 3961-0

F. +43(0)1 489 3961-7

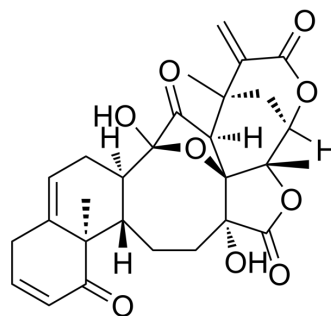
mail@szabo-scandic.com

www.szabo-scandic.com

[linkedin.com/company/szaboscandic](https://www.linkedin.com/company/szaboscandic) 

Physalin C

Cat. No.:	HY-N8679
CAS No.:	27503-33-9
Molecular Formula:	C ₂₈ H ₃₀ O ₉
Molecular Weight:	510.53
Target:	Endogenous Metabolite
Pathway:	Metabolic Enzyme/Protease
Storage:	Please store the product under the recommended conditions in the Certificate of Analysis.



BIOLOGICAL ACTIVITY

Description	Physalin C is a natural product that can be found in physalis angulata. Physalin C shows cytotoxic activities against MCF-7 and HepG2 cells ^[1] .								
In Vitro	<p>Physalin C (compound 6) (0-100 μM; 72 h) shows cytotoxic activities against MCF-7 and HepG2 cells with IC₅₀s of 10.5, 24.2 μM, respectively^[1].</p> <p>Caution: Product has not been fully validated for medical applications. For research use only.</p> <p>Tel: 609-228-6898 Fax: 609-228-5909 E-mail: tech@MedChemExpress.com MCE has not independently confirmed the accuracy of these methods. They are for reference only. Address: 1 Deer Park Dr, Suite Q, Monmouth Junction, NJ 08852, USA</p> <p>Cell Cytotoxicity Assay^[1]</p> <table border="1" style="width: 100%; border-collapse: collapse;"> <tr> <td style="width: 30%;">Cell Line:</td> <td>MCF-7, HepG2 cells</td> </tr> <tr> <td>Concentration:</td> <td>0-100 μM</td> </tr> <tr> <td>Incubation Time:</td> <td>72 h</td> </tr> <tr> <td>Result:</td> <td>Showed cytotoxic activities with IC₅₀s of 10.5, 24.2 μM for MCF-7, HepG2 cells, respectively.</td> </tr> </table>	Cell Line:	MCF-7, HepG2 cells	Concentration:	0-100 μM	Incubation Time:	72 h	Result:	Showed cytotoxic activities with IC ₅₀ s of 10.5, 24.2 μM for MCF-7, HepG2 cells, respectively.
Cell Line:	MCF-7, HepG2 cells								
Concentration:	0-100 μM								
Incubation Time:	72 h								
Result:	Showed cytotoxic activities with IC ₅₀ s of 10.5, 24.2 μM for MCF-7, HepG2 cells, respectively.								

REFERENCES

[1]. Jia-Jia Fan, et al. A Novel Cytotoxic Physalin from Physalis angulata. Natural Product Communications, 2017, 12(10):1589-1591.