



SZABO SCANDIC

Part of Europa Biosite

Produktinformation



Forschungsprodukte & Biochemikalien



Zellkultur & Verbrauchsmaterial



Diagnostik & molekulare Diagnostik



Laborgeräte & Service

Weitere Information auf den folgenden Seiten!
See the following pages for more information!



Lieferung & Zahlungsart

siehe unsere [Liefer- und Versandbedingungen](#)

Zuschläge

- Mindermengenzuschlag
- Trockeneiszuschlag
- Gefahrgutzuschlag
- Expressversand

SZABO-SCANDIC HandelsgmbH

Quellenstraße 110, A-1100 Wien

T. +43(0)1 489 3961-0

F. +43(0)1 489 3961-7

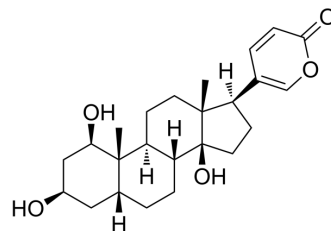
mail@szabo-scandic.com

www.szabo-scandic.com

[linkedin.com/company/szaboscandic](https://www.linkedin.com/company/szaboscandic) 

1 β -Hydroxybufalin

Cat. No.:	HY-N8695
CAS No.:	366004-27-5
Molecular Formula:	C ₂₄ H ₃₄ O ₅
Molecular Weight:	402.52
Target:	Others
Pathway:	Others
Storage:	Please store the product under the recommended conditions in the Certificate of Analysis.



BIOLOGICAL ACTIVITY

Description	1 β -Hydroxybufalin is a bufadienolide that can be isolated from Ch'an Su. 1 β -Hydroxybufalin inhibits cancer cell growth ^[1] .								
In Vitro	<p>1β-Hydroxybufalin (0-1 μg/mL; 72 h) inhibits cell growth with IC₅₀s of 0.024, 0.012, 0.0044, 0.014, 0.011 μg/mL for BXP3, MCF7, SF268, NCIH460, KM20L2, DU145 cells, respectively^[1].</p> <p>MCE has not independently confirmed the accuracy of these methods. They are for reference only.</p> <p>Cell Viability Assay^[1]</p> <table border="1"> <tr> <td>Cell Line:</td> <td>BXP3, MCF7, SF268, NCIH460, KM20L2, DU145 cells</td> </tr> <tr> <td>Concentration:</td> <td>0-1 μg/mL</td> </tr> <tr> <td>Incubation Time:</td> <td>72 h</td> </tr> <tr> <td>Result:</td> <td>Inhibited cell growth with IC₅₀s of 0.024, 0.012, 0.0044, 0.014, 0.011 μg/mL for BXP3, MCF7, SF268, NCIH460, KM20L2, DU145 cells, respectively.</td> </tr> </table>	Cell Line:	BXP3, MCF7, SF268, NCIH460, KM20L2, DU145 cells	Concentration:	0-1 μ g/mL	Incubation Time:	72 h	Result:	Inhibited cell growth with IC ₅₀ s of 0.024, 0.012, 0.0044, 0.014, 0.011 μ g/mL for BXP3, MCF7, SF268, NCIH460, KM20L2, DU145 cells, respectively.
Cell Line:	BXP3, MCF7, SF268, NCIH460, KM20L2, DU145 cells								
Concentration:	0-1 μ g/mL								
Incubation Time:	72 h								
Result:	Inhibited cell growth with IC ₅₀ s of 0.024, 0.012, 0.0044, 0.014, 0.011 μ g/mL for BXP3, MCF7, SF268, NCIH460, KM20L2, DU145 cells, respectively.								

REFERENCES

[1]. Nogawa T, et al. Isolation and structure of five new cancer cell growth inhibitory bufadienolides from the Chinese traditional drug Ch'an Su. J Nat Prod. 2001 Sep;64(9):1148-52.

Caution: Product has not been fully validated for medical applications. For research use only.

Tel: 609-228-6898

Fax: 609-228-5909

E-mail: tech@MedChemExpress.com

Address: 1 Deer Park Dr, Suite Q, Monmouth Junction, NJ 08852, USA