



# SZABO SCANDIC

Part of Europa Biosite

## Produktinformation



Forschungsprodukte & Biochemikalien



Zellkultur & Verbrauchsmaterial



Diagnostik & molekulare Diagnostik



Laborgeräte & Service

Weitere Information auf den folgenden Seiten!  
See the following pages for more information!



### Lieferung & Zahlungsart

siehe unsere [Liefer- und Versandbedingungen](#)

### Zuschläge

- Mindermengenzuschlag
- Trockeneiszuschlag
- Gefahrgutzuschlag
- Expressversand

### SZABO-SCANDIC HandelsgmbH

Quellenstraße 110, A-1100 Wien

T. +43(0)1 489 3961-0

F. +43(0)1 489 3961-7

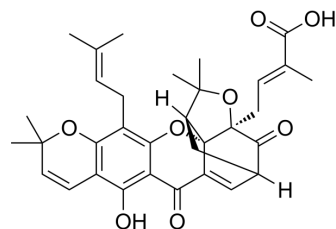
[mail@szabo-scandic.com](mailto:mail@szabo-scandic.com)

[www.szabo-scandic.com](http://www.szabo-scandic.com)

[linkedin.com/company/szaboscandic](https://www.linkedin.com/company/szaboscandic) 

## Isomorellic acid

|                    |   |
|--------------------|---|
| Cat. No.:          | HY-N8727  |
| CAS No.:           | 5262-69-1   |
| Molecular Formula: | C <sub>33</sub> H <sub>36</sub> O <sub>8</sub>  |
| Molecular Weight:  | 560.63  |
| Target:            | Others  |
| Pathway:           | Others  |
| Storage:           | Please store the product under the recommended conditions in the Certificate of Analysis. |



### BIOLOGICAL ACTIVITY

|             |  |
|-------------|--|
| Description | Isomorellic acid is a cytotoxic caged xanthone and can be used for cancer research <sup>[1]</sup> .  |
| In Vitro    | Isomorellic acid (44 h) shows inhibitory effects with IC <sub>50</sub> s of 1.86±0.13 µg/mL and 0.91±0.07 µg/mL against K562/ADR and K562/S cell lines, respectively <sup>[1]</sup> .<br>MCE has not independently confirmed the accuracy of these methods. They are for reference only. |

### REFERENCES

[1]. Han QB, et al. Cytotoxic polypropenylated xanthenes from the resin of *Garcinia hanburyi*. *Chem Pharm Bull (Tokyo)*. 2006 Feb;54(2):265-7.

**Caution: Product has not been fully validated for medical applications. For research use only.**

Tel: 609-228-6898

Fax: 609-228-5909

E-mail: tech@MedChemExpress.com

Address: 1 Deer Park Dr, Suite Q, Monmouth Junction, NJ 08852, USA