



# SZABO SCANDIC

Part of Europa Biosite

## Produktinformation



Forschungsprodukte & Biochemikalien



Zellkultur & Verbrauchsmaterial



Diagnostik & molekulare Diagnostik



Laborgeräte & Service

Weitere Information auf den folgenden Seiten!  
See the following pages for more information!



### Lieferung & Zahlungsart

siehe unsere [Liefer- und Versandbedingungen](#)

### Zuschläge

- Mindermengenzuschlag
- Trockeneiszuschlag
- Gefahrgutzuschlag
- Expressversand

### SZABO-SCANDIC HandelsgmbH

Quellenstraße 110, A-1100 Wien

T. +43(0)1 489 3961-0

F. +43(0)1 489 3961-7

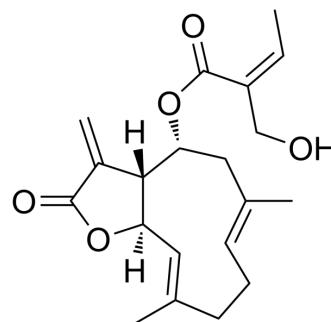
[mail@szabo-scandic.com](mailto:mail@szabo-scandic.com)

[www.szabo-scandic.com](http://www.szabo-scandic.com)

[linkedin.com/company/szaboscandic](https://www.linkedin.com/company/szaboscandic) 

## Eupaglehnnin C

<b>Cat. No.:</b>	HY-N9172
<b>CAS No.:</b>	476630-49-6
<b>Molecular Formula:</b>	C <sub>20</sub> H <sub>26</sub> O <sub>5</sub>
<b>Molecular Weight:</b>	346.42
<b>Target:</b>	Others
<b>Pathway:</b>	Others
<b>Storage:</b>	Please store the product under the recommended conditions in the Certificate of Analysis.



### BIOLOGICAL ACTIVITY

<b>Description</b>	Eupaglehnnin C is a germacranolide-type sesquiterpene. Eupaglehnnin C can be isolated from the MeOH extract of <i>Eupatorium glehni</i> (Compositae). Eupaglehnnin C has cytotoxic activity against HeLa-S3 cancer cell lines <sup>[1][2]</sup> .
<b>In Vitro</b>	Eupaglehnnin C inhibits HeLa-S3 with an IC <sub>50</sub> value of 2.19 mg/mL <sup>[2]</sup> . MCE has not independently confirmed the accuracy of these methods. They are for reference only.

### REFERENCES

[1]. Tori M, et al. Seven germacranolides, eupaglehnnins A, B, C, D, E, and F, and 2 $\alpha$ -acetoxyepitulipinolide from *Eupatorium glehni*. *Chem Pharm Bull (Tokyo)*. 2002 Sep;50(9):1250-4.

[2]. Zhang ML, et al. Chemical constituents of plants from the genus *Eupatorium*. *Chem Biodivers*. 2008 Jan;5(1):40-55.

**Caution: Product has not been fully validated for medical applications. For research use only.**

Tel: 609-228-6898

Fax: 609-228-5909

E-mail: tech@MedChemExpress.com

Address: 1 Deer Park Dr, Suite Q, Monmouth Junction, NJ 08852, USA