



SZABO SCANDIC

Part of Europa Biosite

Produktinformation



Forschungsprodukte & Biochemikalien



Zellkultur & Verbrauchsmaterial



Diagnostik & molekulare Diagnostik



Laborgeräte & Service

Weitere Information auf den folgenden Seiten!
See the following pages for more information!



Lieferung & Zahlungsart

siehe unsere [Liefer- und Versandbedingungen](#)

Zuschläge

- Mindermengenzuschlag
- Trockeneiszuschlag
- Gefahrgutzuschlag
- Expressversand

SZABO-SCANDIC HandelsgmbH

Quellenstraße 110, A-1100 Wien

T. +43(0)1 489 3961-0

F. +43(0)1 489 3961-7

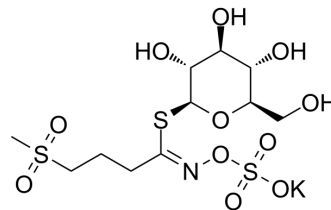
mail@szabo-scandic.com

www.szabo-scandic.com

[linkedin.com/company/szaboscandic](https://www.linkedin.com/company/szaboscandic) 

Glucocheirolin

Cat. No.:	HY-N9226
CAS No.:	15592-36-6
Molecular Formula:	C ₁₁ H ₂₀ KNO ₁₁ S ₃
Molecular Weight:	477.57
Target:	Others
Pathway:	Others
Storage:	Please store the product under the recommended conditions in the Certificate of Analysis.



BIOLOGICAL ACTIVITY

Description

Glucocheirolin, a natural compound that can be isolated from *Erysimum corinthium* Boiss, possesses antinutritional and toxic effects in rats^[1].

REFERENCES

[1]. N Bille, et al. Antinutritional and toxic effects in rats of individual glucosinolates (+/- myrosinases) added to a standard diet. 1. Effects on protein utilization and organ weights. *Z Tierphysiol Tierernahr Futtermittelkd.* 1983 May;49(4-5):195-210.

Caution: Product has not been fully validated for medical applications. For research use only.

Tel: 609-228-6898

Fax: 609-228-5909

E-mail: tech@MedChemExpress.com

Address: 1 Deer Park Dr, Suite Q, Monmouth Junction, NJ 08852, USA