



SZABO SCANDIC

Part of Europa Biosite

Produktinformation



Forschungsprodukte & Biochemikalien



Zellkultur & Verbrauchsmaterial



Diagnostik & molekulare Diagnostik



Laborgeräte & Service

Weitere Information auf den folgenden Seiten!
See the following pages for more information!



Lieferung & Zahlungsart

siehe unsere [Liefer- und Versandbedingungen](#)

Zuschläge

- Mindermengenzuschlag
- Trockeneiszuschlag
- Gefahrgutzuschlag
- Expressversand

SZABO-SCANDIC HandelsgmbH

Quellenstraße 110, A-1100 Wien

T. +43(0)1 489 3961-0

F. +43(0)1 489 3961-7

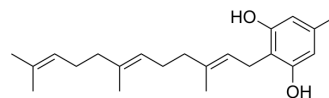
mail@szabo-scandic.com

www.szabo-scandic.com

[linkedin.com/company/szaboscandic](https://www.linkedin.com/company/szaboscandic) 

Grifolin

Cat. No.:	HY-N9271
CAS No.:	6903-07-7
Molecular Formula:	C ₂₂ H ₃₂ O ₂
Molecular Weight:	328.49
Target:	Apoptosis
Pathway:	Apoptosis
Storage:	4°C, protect from light, stored under nitrogen * In solvent : -80°C, 6 months; -20°C, 1 month (protect from light, stored under nitrogen)



SOLVENT & SOLUBILITY

In Vitro

DMSO : 16.5 mg/mL (50.23 mM; Need ultrasonic and warming)

Concentration	Solvent	Mass		
		1 mg	5 mg	10 mg
Preparing Stock Solutions	1 mM	3.0442 mL	15.2212 mL	30.4423 mL
	5 mM	0.6088 mL	3.0442 mL	6.0885 mL
	10 mM	0.3044 mL	1.5221 mL	3.0442 mL

Please refer to the solubility information to select the appropriate solvent.

BIOLOGICAL ACTIVITY

Description

Grifolin is an antineoplastic agent can be isolated from the mushroom *Albatrellus confluens* and significantly induces apoptosis^[1].

CUSTOMER VALIDATION

- Gut Microbes. 2024 Jan-Dec;16(1):2333790.

See more customer validations on www.MedChemExpress.com

REFERENCES

[1]. Ye M, et al. Grifolin, a potential antitumor natural product from the mushroom *Albatrellus confluens*, induces cell-cycle arrest in G1 phase via the ERK1/2 pathway.

Caution: Product has not been fully validated for medical applications. For research use only.

Tel: 609-228-6898

Fax: 609-228-5909

E-mail: tech@MedChemExpress.com

Address: 1 Deer Park Dr, Suite Q, Monmouth Junction, NJ 08852, USA