



# SZABO SCANDIC

Part of Europa Biosite

## Produktinformation



Forschungsprodukte & Biochemikalien



Zellkultur & Verbrauchsmaterial



Diagnostik & molekulare Diagnostik



Laborgeräte & Service

Weitere Information auf den folgenden Seiten!  
See the following pages for more information!



### Lieferung & Zahlungsart

siehe unsere [Liefer- und Versandbedingungen](#)

### Zuschläge

- Mindermengenzuschlag
- Trockeneiszuschlag
- Gefahrgutzuschlag
- Expressversand

### SZABO-SCANDIC HandelsgmbH

Quellenstraße 110, A-1100 Wien

T. +43(0)1 489 3961-0

F. +43(0)1 489 3961-7

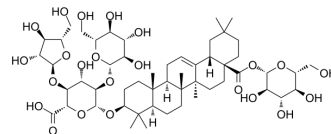
[mail@szabo-scandic.com](mailto:mail@szabo-scandic.com)

[www.szabo-scandic.com](http://www.szabo-scandic.com)

[linkedin.com/company/szaboscandic](https://www.linkedin.com/company/szaboscandic) 

## Tarasaponin IV

Cat. No.:	HY-N9328
CAS No.:	156980-31-3
Molecular Formula:	C <sub>53</sub> H <sub>84</sub> O <sub>23</sub>
Molecular Weight:	1089.22
Target:	Others
Pathway:	Others
Storage:	Please store the product under the recommended conditions in the Certificate of Analysis.



### BIOLOGICAL ACTIVITY

<b>Description</b>	Tarasaponin IV, as an oleanane-type triterpene saponin, is isolated from the bark of <i>Aralia elata</i> . Tarasaponin IV can be used for the research of cancer <sup>[1]</sup> .
<b>In Vitro</b>	Tarasaponin IV (0.1~10 μM; 1 hour; HepG2 cells) shows that the inhibitory effects on NF-κB transcriptional activation in HepG2 cells stimulated with TNFα <sup>[1]</sup> . MCE has not independently confirmed the accuracy of these methods. They are for reference only.

### REFERENCES

[1]. Nhiem NX, et al. Oleanane-type triterpene saponins from the bark of *Aralia elata* and their NF-κB inhibition and PPAR activation signal pathway. *Bioorg Med Chem Lett*. 2011;21(20):6143-6147.

**Caution: Product has not been fully validated for medical applications. For research use only.**

Tel: 609-228-6898

Fax: 609-228-5909

E-mail: tech@MedChemExpress.com

Address: 1 Deer Park Dr, Suite Q, Monmouth Junction, NJ 08852, USA