



SZABO SCANDIC

Part of Europa Biosite

Produktinformation



Forschungsprodukte & Biochemikalien



Zellkultur & Verbrauchsmaterial



Diagnostik & molekulare Diagnostik



Laborgeräte & Service

Weitere Information auf den folgenden Seiten!
See the following pages for more information!



Lieferung & Zahlungsart

siehe unsere [Liefer- und Versandbedingungen](#)

Zuschläge

- Mindermengenzuschlag
- Trockeneiszuschlag
- Gefahrgutzuschlag
- Expressversand

SZABO-SCANDIC HandelsgmbH

Quellenstraße 110, A-1100 Wien

T. +43(0)1 489 3961-0

F. +43(0)1 489 3961-7

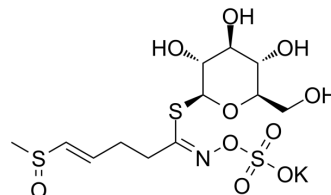
mail@szabo-scandic.com

www.szabo-scandic.com

[linkedin.com/company/szaboscandic](https://www.linkedin.com/company/szaboscandic) 

Glucoraphenin potassium

Cat. No.:	HY-N9348A
CAS No.:	108844-81-1
Molecular Formula:	C ₁₂ H ₂₀ KNO ₁₀ S ₃
Molecular Weight:	473.58
Target:	Others
Pathway:	Others
Storage:	Please store the product under the recommended conditions in the Certificate of Analysis.



BIOLOGICAL ACTIVITY

Description	Glucoraphenin potassium induces xenobiotic metabolizing enzymes (XMEs). Glucoraphenin potassium, the predominant and orally active glucosinolate in radish sprouts, is hydrolyzed by myrosinase to sulforaphene that is implicated to exert anticancerogenic effects ^{[1][2]} .
IC ₅₀ & Target	XME ^[2]

REFERENCES

[1]. Ruimin Li, et al. Glucoraphenin, sulforaphene, and antiproliferative capacity of radish sprouts in germinating and thermal processes. *European Food Research and Technology* volume 243, pages547–554 (2017).

[2]. Jessica Barillari, et al. Glucoraphasatin and glucoraphenin, a redox pair of glucosinolates of brassicaceae, differently affect metabolizing enzymes in rats. *J Agric Food Chem.* 2007 Jul 11;55(14):5505-11.

Caution: Product has not been fully validated for medical applications. For research use only.

Tel: 609-228-6898

Fax: 609-228-5909

E-mail: tech@MedChemExpress.com

Address: 1 Deer Park Dr, Suite Q, Monmouth Junction, NJ 08852, USA