



SZABO SCANDIC

Part of Europa Biosite

Produktinformation



Forschungsprodukte & Biochemikalien



Zellkultur & Verbrauchsmaterial



Diagnostik & molekulare Diagnostik



Laborgeräte & Service

Weitere Information auf den folgenden Seiten!
See the following pages for more information!



Lieferung & Zahlungsart

siehe unsere [Liefer- und Versandbedingungen](#)

Zuschläge

- Mindermengenzuschlag
- Trockeneiszuschlag
- Gefahrgutzuschlag
- Expressversand

SZABO-SCANDIC HandelsgmbH

Quellenstraße 110, A-1100 Wien

T. +43(0)1 489 3961-0

F. +43(0)1 489 3961-7

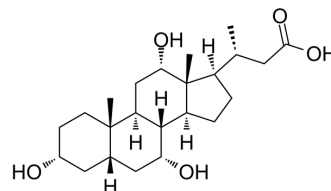
mail@szabo-scandic.com

www.szabo-scandic.com

[linkedin.com/company/szaboscandic](https://www.linkedin.com/company/szaboscandic) 

Norcholeic acid

Cat. No.:	HY-N9457		
CAS No.:	60696-62-0		
Molecular Formula:	C ₂₃ H ₃₈ O ₅		
Molecular Weight:	394.54		
Target:	Others		
Pathway:	Others		
Storage:	Powder	-20°C	3 years
		4°C	2 years
	In solvent	-80°C	6 months
		-20°C	1 month



SOLVENT & SOLUBILITY

In Vitro	DMSO : 100 mg/mL (253.46 mM; Need ultrasonic)				
		Solvent Concentration	Mass 1 mg	5 mg	10 mg
	Preparing Stock Solutions	1 mM	2.5346 mL	12.6730 mL	25.3460 mL
		5 mM	0.5069 mL	2.5346 mL	5.0692 mL
10 mM		0.2535 mL	1.2673 mL	2.5346 mL	
Please refer to the solubility information to select the appropriate solvent.					
In Vivo	<ol style="list-style-type: none"> Add each solvent one by one: 10% DMSO >> 40% PEG300 >> 5% Tween-80 >> 45% saline Solubility: ≥ 2.5 mg/mL (6.34 mM); Clear solution Add each solvent one by one: 10% DMSO >> 90% (20% SBE-β-CD in saline) Solubility: ≥ 2.5 mg/mL (6.34 mM); Clear solution Add each solvent one by one: 10% DMSO >> 90% corn oil Solubility: ≥ 2.5 mg/mL (6.34 mM); Clear solution 				

BIOLOGICAL ACTIVITY

Description	Norcholeic acid is a normal minor bile acid having four side chain and exists in human urine and meconium. Norcholeic acid can become prominent under certain pathological conditions. Norcholeic acid is efficiently absorbed from intestine and quickly excreted into the bile but not into urine ^[1] .
In Vivo	Norcholeic acid (6.4 g/L; p.o.; 24 hours) shows that averaging 40 % of the administered radioactivity is recovered from the feces during the first 24 hours ^[1] . Norcholeic acid can become prominent under certain pathological conditions. Norcholeic acid is efficiently absorbed from

intestine and quickly excreted into the bile but not into urine^[1].

MCE has not independently confirmed the accuracy of these methods. They are for reference only.

Animal Model:	Male Wistar rats (100~150g)
Dosage:	6.4 g/L
Administration:	P.o.
Result:	Shows that averaging 40 % of the administered radioactivity was recovered from the feces during the first 24 hours.

REFERENCES

[1]. Nakatomi F, et al. Intestinal absorption and metabolism of norcholic acid in rats. J Pharmacobiodyn. 1985;8(7):557-563.

Caution: Product has not been fully validated for medical applications. For research use only.

Tel: 609-228-6898

Fax: 609-228-5909

E-mail: tech@MedChemExpress.com

Address: 1 Deer Park Dr, Suite Q, Monmouth Junction, NJ 08852, USA