



# SZABO SCANDIC

Part of Europa Biosite

## Produktinformation



Forschungsprodukte & Biochemikalien



Zellkultur & Verbrauchsmaterial



Diagnostik & molekulare Diagnostik



Laborgeräte & Service

Weitere Information auf den folgenden Seiten!  
See the following pages for more information!



### Lieferung & Zahlungsart

siehe unsere [Liefer- und Versandbedingungen](#)

### Zuschläge

- Mindermengenzuschlag
- Trockeneiszuschlag
- Gefahrgutzuschlag
- Expressversand

### SZABO-SCANDIC HandelsgmbH

Quellenstraße 110, A-1100 Wien

T. +43(0)1 489 3961-0

F. +43(0)1 489 3961-7

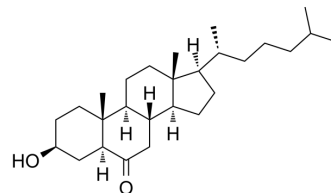
[mail@szabo-scandic.com](mailto:mail@szabo-scandic.com)

[www.szabo-scandic.com](http://www.szabo-scandic.com)

[linkedin.com/company/szaboscandic](https://www.linkedin.com/company/szaboscandic) 

## 6-Ketocholestanol

Cat. No.:	HY-N9608
CAS No.:	1175-06-0
Molecular Formula:	C <sub>27</sub> H <sub>46</sub> O <sub>2</sub>
Molecular Weight:	402.65
Target:	Others
Pathway:	Others
Storage:	Please store the product under the recommended conditions in the Certificate of Analysis.



### SOLVENT & SOLUBILITY

In Vitro	DMSO : 100 mg/mL (248.35 mM; Need ultrasonic)																								
	Preparing Stock Solutions	<table border="1"> <thead> <tr> <th>Solvent Concentration</th> <th>Mass</th> <th>1 mg</th> <th>5 mg</th> <th>10 mg</th> </tr> </thead> <tbody> <tr> <td>1 mM</td> <td></td> <td>2.4835 mL</td> <td>12.4177 mL</td> <td>24.8355 mL</td> </tr> <tr> <td>5 mM</td> <td></td> <td>0.4967 mL</td> <td>2.4835 mL</td> <td>4.9671 mL</td> </tr> <tr> <td>10 mM</td> <td></td> <td>0.2484 mL</td> <td>1.2418 mL</td> <td>2.4835 mL</td> </tr> </tbody> </table>	Solvent Concentration	Mass	1 mg	5 mg	10 mg	1 mM		2.4835 mL	12.4177 mL	24.8355 mL	5 mM		0.4967 mL	2.4835 mL	4.9671 mL	10 mM		0.2484 mL	1.2418 mL	2.4835 mL			
		Solvent Concentration	Mass	1 mg	5 mg	10 mg																			
		1 mM		2.4835 mL	12.4177 mL	24.8355 mL																			
		5 mM		0.4967 mL	2.4835 mL	4.9671 mL																			
10 mM		0.2484 mL	1.2418 mL	2.4835 mL																					
Please refer to the solubility information to select the appropriate solvent.																									
In Vivo	1. Add each solvent one by one: 10% DMSO >> 40% PEG300 >> 5% Tween-80 >> 45% saline Solubility: ≥ 2.5 mg/mL (6.21 mM); Clear solution																								
	2. Add each solvent one by one: 10% DMSO >> 90% (20% SBE-β-CD in saline) Solubility: ≥ 2.5 mg/mL (6.21 mM); Clear solution																								
	3. Add each solvent one by one: 10% DMSO >> 90% corn oil Solubility: ≥ 2.5 mg/mL (6.21 mM); Clear solution																								

### BIOLOGICAL ACTIVITY

Description	6-Ketocholestanol is a recoupler for mitochondria, chromatophores and cytochrome oxidase proteoliposomes. 6-Ketocholestanol increases the membrane dipole potential <sup>[1]</sup> .
-------------	--

### REFERENCES

[1]. Starkov AA, et al. 6-Ketocholestanol is a recoupler for mitochondria, chromatophores and cytochrome oxidase proteoliposomes. Biochim Biophys Acta. 1997 Jan 16;1318(1-2):159-72.

---

**Caution: Product has not been fully validated for medical applications. For research use only.**

Tel: 609-228-6898

Fax: 609-228-5909

E-mail: [tech@MedChemExpress.com](mailto:tech@MedChemExpress.com)

Address: 1 Deer Park Dr, Suite Q, Monmouth Junction, NJ 08852, USA