



SZABO SCANDIC

Part of Europa Biosite

Produktinformation



Forschungsprodukte & Biochemikalien



Zellkultur & Verbrauchsmaterial



Diagnostik & molekulare Diagnostik



Laborgeräte & Service

Weitere Information auf den folgenden Seiten!
See the following pages for more information!



Lieferung & Zahlungsart

siehe unsere [Liefer- und Versandbedingungen](#)

Zuschläge

- Mindermengenzuschlag
- Trockeneiszuschlag
- Gefahrgutzuschlag
- Expressversand

SZABO-SCANDIC HandelsgmbH

Quellenstraße 110, A-1100 Wien

T. +43(0)1 489 3961-0

F. +43(0)1 489 3961-7

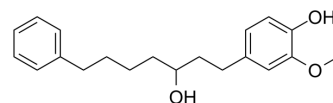
mail@szabo-scandic.com

www.szabo-scandic.com

[linkedin.com/company/szaboscandic](https://www.linkedin.com/company/szaboscandic) 

Oxyphyllacinol

Cat. No.:	HY-N9633		
CAS No.:	87657-77-0		
Molecular Formula:	C ₂₀ H ₂₆ O ₃		
Molecular Weight:	314.42		
Target:	Others		
Pathway:	Others		
Storage:	Powder	-20°C	3 years
		4°C	2 years
	In solvent	-80°C	6 months
		-20°C	1 month



SOLVENT & SOLUBILITY

In Vitro	DMSO : 100 mg/mL (318.05 mM; Need ultrasonic)			
		Solvent Concentration	Mass	
			1 mg	5 mg
			10 mg	
Preparing Stock Solutions	1 mM	3.1805 mL	15.9023 mL	31.8046 mL
	5 mM	0.6361 mL	3.1805 mL	6.3609 mL
	10 mM	0.3180 mL	1.5902 mL	3.1805 mL
Please refer to the solubility information to select the appropriate solvent.				
In Vivo	<ol style="list-style-type: none"> Add each solvent one by one: 10% DMSO >> 40% PEG300 >> 5% Tween-80 >> 45% saline Solubility: ≥ 2.5 mg/mL (7.95 mM); Clear solution Add each solvent one by one: 10% DMSO >> 90% (20% SBE-β-CD in saline) Solubility: ≥ 2.5 mg/mL (7.95 mM); Clear solution Add each solvent one by one: 10% DMSO >> 90% corn oil Solubility: ≥ 2.5 mg/mL (7.95 mM); Clear solution 			

BIOLOGICAL ACTIVITY

Description	Oxyphyllacinol is a natural product that can be derived from the fruit of <i>Alpinia oxyphylla</i> ^[1] .
-------------	---

REFERENCES

[1]. Hui LY, et, al. Nine Representative Phytochemicals Occurring in Leaves and Rhizomes of *Alpinia oxyphylla* Different to Those of Fruits Determined Using LC-MS/MS. 2015

Caution: Product has not been fully validated for medical applications. For research use only.

Tel: 609-228-6898

Fax: 609-228-5909

E-mail: tech@MedChemExpress.com

Address: 1 Deer Park Dr, Suite Q, Monmouth Junction, NJ 08852, USA