



SZABO SCANDIC

Part of Europa Biosite

Produktinformation



Forschungsprodukte & Biochemikalien



Zellkultur & Verbrauchsmaterial



Diagnostik & molekulare Diagnostik



Laborgeräte & Service

Weitere Information auf den folgenden Seiten!
See the following pages for more information!



Lieferung & Zahlungsart

siehe unsere [Liefer- und Versandbedingungen](#)

Zuschläge

- Mindermengenzuschlag
- Trockeneiszuschlag
- Gefahrgutzuschlag
- Expressversand

SZABO-SCANDIC HandelsgmbH

Quellenstraße 110, A-1100 Wien

T. +43(0)1 489 3961-0

F. +43(0)1 489 3961-7

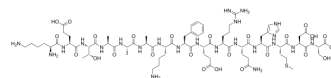
mail@szabo-scandic.com

www.szabo-scandic.com

[linkedin.com/company/szaboscandic](https://www.linkedin.com/company/szaboscandic) 

S Tag Peptide

Cat. No.:	HY-P0326
CAS No.:	7429-70-1
Molecular Formula:	C ₇₃ H ₁₁₇ N ₂₃ O ₂₅ S
Molecular Weight:	1748.91
Sequence:	Lys-Glu-Thr-Ala-Ala-Ala-Lys-Phe-Glu-Arg-Gln-His-Met-Asp-Ser
Sequence Shortening:	KETAAAKFERQHMS
Target:	Others
Pathway:	Others
Storage:	-20°C, protect from light, stored under nitrogen * In solvent : -80°C, 6 months; -20°C, 1 month (protect from light, stored under nitrogen)



SOLVENT & SOLUBILITY

In Vitro

DMSO : 10 mg/mL (5.72 mM; Need ultrasonic)

Concentration	Solvent	Mass		
		1 mg	5 mg	10 mg
Preparing Stock Solutions	1 mM	0.5718 mL	2.8589 mL	5.7178 mL
	5 mM	0.1144 mL	0.5718 mL	1.1436 mL
	10 mM	---	---	---

Please refer to the solubility information to select the appropriate solvent.

BIOLOGICAL ACTIVITY

Description

S Tag Peptide is a 15 amino acid peptide derived from RNase A.

In Vitro

S Tag sequence is a novel fusion peptide tag for recombinant proteins that allows detection by a rapid, sensitive homogeneous assay or by colorimetric detection in Western blots. S Tag can be applied to purification of target proteins^[1]. MCE has not independently confirmed the accuracy of these methods. They are for reference only.

REFERENCES

[1]. Mark McCormick, et al. S Tag: A Multipurpose Fusion Peptide for Recombinant Proteins.

Caution: Product has not been fully validated for medical applications. For research use only.

Tel: 609-228-6898

Fax: 609-228-5909

E-mail: tech@MedChemExpress.com

Address: 1 Deer Park Dr, Suite Q, Monmouth Junction, NJ 08852, USA