



SZABO SCANDIC

Part of Europa Biosite

Produktinformation



Forschungsprodukte & Biochemikalien



Zellkultur & Verbrauchsmaterial



Diagnostik & molekulare Diagnostik



Laborgeräte & Service

Weitere Information auf den folgenden Seiten!
See the following pages for more information!



Lieferung & Zahlungsart

siehe unsere [Liefer- und Versandbedingungen](#)

Zuschläge

- Mindermengenzuschlag
- Trockeneiszuschlag
- Gefahrgutzuschlag
- Expressversand

SZABO-SCANDIC HandelsgmbH

Quellenstraße 110, A-1100 Wien

T. +43(0)1 489 3961-0

F. +43(0)1 489 3961-7

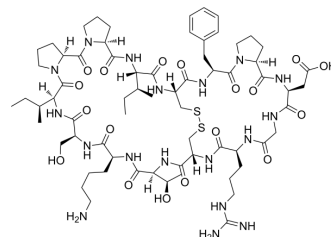
mail@szabo-scandic.com

www.szabo-scandic.com

[linkedin.com/company/szaboscandic](https://www.linkedin.com/company/szaboscandic) 

SFTI-1

Cat. No.:	HY-P10033
CAS No.:	245080-24-4
Molecular Formula:	C ₆₇ H ₁₀₄ N ₁₈ O ₁₈ S ₂
Molecular Weight:	1513.78
Sequence:	Cyclic(Arg-Cys-Thr-Lys-Ser-Ile-Pro-Pro-Ile-Cys-Phe-Pro-Asp-Gly) (Disulfide bridge: Cys 2-Cys10)
Sequence Shortening:	Cyclic(RCTKSIPPICFPDG) (Disulfide bridge: Cys2-Cys10)
Target:	Ser/Thr Protease
Pathway:	Metabolic Enzyme/Protease
Storage:	Sealed storage, away from moisture Powder -80°C 2 years -20°C 1 year
	* In solvent : -80°C, 6 months; -20°C, 1 month (sealed storage, away from moisture)



SOLVENT & SOLUBILITY

In Vitro

DMSO : 100 mg/mL (66.06 mM; Need ultrasonic)

Concentration	Mass		
	1 mg	5 mg	10 mg
1 mM	0.6606 mL	3.3030 mL	6.6060 mL
5 mM	0.1321 mL	0.6606 mL	1.3212 mL
10 mM	0.0661 mL	0.3303 mL	0.6606 mL

Please refer to the solubility information to select the appropriate solvent.

BIOLOGICAL ACTIVITY

Description

SFTI-1 is a cyclic peptide trypsin inhibitor comprising 14 amino acid residues. SFTI-1 is a potent Bowman-Birk inhibitor.

REFERENCES

[1]. M L Korsinczky, et al. Solution structures by 1H NMR of the novel cyclic trypsin inhibitor SFTI-1 from sunflower seeds and an acyclic permutant. J Mol Biol. 2001 Aug 17;311(3):579-91.

Caution: Product has not been fully validated for medical applications. For research use only.

Tel: 609-228-6898

Fax: 609-228-5909

E-mail: tech@MedChemExpress.com

Address: 1 Deer Park Dr, Suite Q, Monmouth Junction, NJ 08852, USA