



# SZABO SCANDIC

Part of Europa Biosite

## Produktinformation



Forschungsprodukte & Biochemikalien



Zellkultur & Verbrauchsmaterial



Diagnostik & molekulare Diagnostik



Laborgeräte & Service

Weitere Information auf den folgenden Seiten!  
See the following pages for more information!



### Lieferung & Zahlungsart

siehe unsere [Liefer- und Versandbedingungen](#)

### Zuschläge

- Mindermengenzuschlag
- Trockeneiszuschlag
- Gefahrgutzuschlag
- Expressversand

### SZABO-SCANDIC HandelsgmbH

Quellenstraße 110, A-1100 Wien

T. +43(0)1 489 3961-0

F. +43(0)1 489 3961-7

[mail@szabo-scandic.com](mailto:mail@szabo-scandic.com)

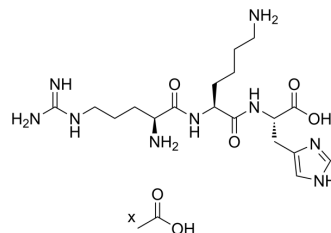
[www.szabo-scandic.com](http://www.szabo-scandic.com)

[linkedin.com/company/szaboscandic](https://www.linkedin.com/company/szaboscandic) 

## RKH acetate

Cat. No.:	HY-P10208A
Molecular Formula:	C <sub>18</sub> H <sub>33</sub> N <sub>9</sub> O <sub>4</sub> ·xC <sub>2</sub> H <sub>4</sub> O <sub>2</sub>
Sequence:	Arg-Lys-His
Sequence Shortening:	RKH
Target:	Toll-like Receptor (TLR)
Pathway:	Immunology/Inflammation
Storage:	Sealed storage, away from moisture
	Powder    -80°C    2 years
	-20°C    1 year

\* In solvent : -80°C, 6 months; -20°C, 1 month (sealed storage, away from moisture)



### SOLVENT & SOLUBILITY

In Vitro	DMSO : 200 mg/mL (Need ultrasonic) H <sub>2</sub> O : ≥ 30 mg/mL * "≥" means soluble, but saturation unknown.
----------	---

### BIOLOGICAL ACTIVITY

Description	RKH acetate exerts protective effects against sepsis-induced death and organ damage. RKH acetate can directly bind to Toll-like receptor 4 (TLR4) and block TLR4 signal transduction in immune cells <sup>[1]</sup> .
IC <sub>50</sub> & Target	TLR4

### REFERENCES

[1]. Shihao Xie, et al. Novel tripeptide RKH derived from Akkermansia muciniphila protects against lethal sepsis. Gut. 2023 Dec 7;73(1):78-91.

**Caution: Product has not been fully validated for medical applications. For research use only.**

Tel: 609-228-6898

Fax: 609-228-5909

E-mail: tech@MedChemExpress.com

Address: 1 Deer Park Dr, Suite Q, Monmouth Junction, NJ 08852, USA