



# SZABO SCANDIC

Part of Europa Biosite

## Produktinformation



Forschungsprodukte & Biochemikalien



Zellkultur & Verbrauchsmaterial



Diagnostik & molekulare Diagnostik



Laborgeräte & Service

Weitere Information auf den folgenden Seiten!  
See the following pages for more information!



### Lieferung & Zahlungsart

siehe unsere [Liefer- und Versandbedingungen](#)

### Zuschläge

- Mindermengenzuschlag
- Trockeneiszuschlag
- Gefahrgutzuschlag
- Expressversand

### SZABO-SCANDIC HandelsgmbH

Quellenstraße 110, A-1100 Wien

T. +43(0)1 489 3961-0

F. +43(0)1 489 3961-7

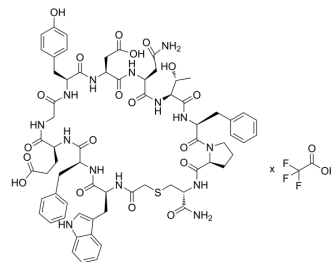
[mail@szabo-scandic.com](mailto:mail@szabo-scandic.com)

[www.szabo-scandic.com](http://www.szabo-scandic.com)

[linkedin.com/company/szaboscandic](https://www.linkedin.com/company/szaboscandic) 

## G7-18NATE TFA

<b>Cat. No.:</b>	HY-P10224A
<b>Molecular Formula:</b>	C <sub>67</sub> H <sub>80</sub> N <sub>14</sub> O <sub>19</sub> S.xC <sub>2</sub> HF <sub>3</sub> O <sub>2</sub>
<b>Sequence:</b>	cyclo(CH <sub>2</sub> CO-Trp-Phe-Glu-Gly-Tyr-Asp-Asn-Thr-Phe-Pro-Cys(NH <sub>2</sub> )-S-)
<b>Sequence Shortening:</b>	cyclo(CH <sub>2</sub> CO-WFEGYDNTFP-Cys(NH <sub>2</sub> )-S-)
<b>Target:</b>	Others
<b>Pathway:</b>	Others
<b>Storage:</b>	Sealed storage, away from moisture Powder    -80°C    2 years -20°C    1 year * In solvent : -80°C, 6 months; -20°C, 1 month (sealed storage, away from moisture)



### SOLVENT & SOLUBILITY

<b>In Vitro</b>	DMSO : 100 mg/mL (Need ultrasonic)
-----------------	------------------------------------

### BIOLOGICAL ACTIVITY

<b>Description</b>	G7-18NATE TFA is a peptide inhibitor of Grb7. G7-18NATE TFA binds to the Grb7-SH2 domain with micromolar affinity (K <sub>d</sub> = 18.1 μM). G7-18NATE TFA inhibits cell proliferation, motility, cell invasion and 3D culture formation in several cancer cell lines <sup>[1][2]</sup> .
<b>In Vitro</b>	G7-18NATE (10 μM, 24 h) inhibits cell migration in MDA-MB-468 cells <sup>[2]</sup> . MCE has not independently confirmed the accuracy of these methods. They are for reference only.

### REFERENCES

- [1]. Sang J, et al. Evaluation of Cyclic Peptide Inhibitors of the Grb7 Breast Cancer Target: Small Change in Cargo Results in Large Change in Cellular Activity. *Molecules*. 2019 Oct 17;24(20):3739.
- [2]. Giricz O, et al. GRB7 is required for triple-negative breast cancer cell invasion and survival. *Breast Cancer Res Treat*. 2012 Jun;133(2):607-15.

**Caution: Product has not been fully validated for medical applications. For research use only.**

Tel: 609-228-6898

Fax: 609-228-5909

E-mail: tech@MedChemExpress.com

Address: 1 Deer Park Dr, Suite Q, Monmouth Junction, NJ 08852, USA