



# SZABO SCANDIC

Part of Europa Biosite

## Produktinformation



Forschungsprodukte & Biochemikalien



Zellkultur & Verbrauchsmaterial



Diagnostik & molekulare Diagnostik



Laborgeräte & Service

Weitere Information auf den folgenden Seiten!  
See the following pages for more information!



### Lieferung & Zahlungsart

siehe unsere [Liefer- und Versandbedingungen](#)

### Zuschläge

- Mindermengenzuschlag
- Trockeneiszuschlag
- Gefahrgutzuschlag
- Expressversand

### SZABO-SCANDIC HandelsgmbH

Quellenstraße 110, A-1100 Wien

T. +43(0)1 489 3961-0

F. +43(0)1 489 3961-7

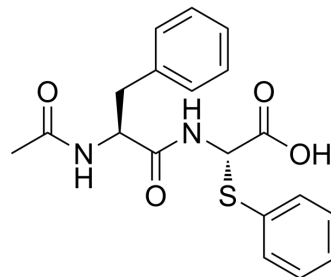
[mail@szabo-scandic.com](mailto:mail@szabo-scandic.com)

[www.szabo-scandic.com](http://www.szabo-scandic.com)

[linkedin.com/company/szaboscandic](https://www.linkedin.com/company/szaboscandic) 

## Ac-Phe-Thiaphe-OH

|                             |   |
|-----------------------------|---|
| <b>Cat. No.:</b>            | HY-P10231   |
| <b>CAS No.:</b>             | 108906-59-8   |
| <b>Molecular Formula:</b>   | C <sub>19</sub> H <sub>20</sub> N <sub>2</sub> O <sub>4</sub> S                           |
| <b>Molecular Weight:</b>    | 372.44  |
| <b>Sequence:</b>            | Ac-Phe-{Phe<Thia>}  |
| <b>Sequence Shortening:</b> | Ac-F-{Phe<Thia>}  |
| <b>Target:</b>              | Carboxypeptidase  |
| <b>Pathway:</b>             | Metabolic Enzyme/Protease   |
| <b>Storage:</b>             | Please store the product under the recommended conditions in the Certificate of Analysis. |



### BIOLOGICAL ACTIVITY

#### Description

Ac-Phe-Thiaphe-OH is a modified peptide, which is utilized as substrate for carboxypeptidase A (CPA)<sup>[1]</sup>.

### REFERENCES

[1]. Brown KS, et al., Determination of carboxypeptidase A using N-acetyl-phenylalanyl-3-thiaphenylalanine as substrate: application to a direct serum assay. *Anal Biochem.* 1987 Feb 15;161(1):219-25.

**Caution: Product has not been fully validated for medical applications. For research use only.**

Tel: 609-228-6898

Fax: 609-228-5909

E-mail: tech@MedChemExpress.com

Address: 1 Deer Park Dr, Suite Q, Monmouth Junction, NJ 08852, USA