



SZABO SCANDIC

Part of Europa Biosite

Produktinformation



Forschungsprodukte & Biochemikalien



Zellkultur & Verbrauchsmaterial



Diagnostik & molekulare Diagnostik



Laborgeräte & Service

Weitere Information auf den folgenden Seiten!
See the following pages for more information!



Lieferung & Zahlungsart

siehe unsere [Liefer- und Versandbedingungen](#)

Zuschläge

- Mindermengenzuschlag
- Trockeneiszuschlag
- Gefahrgutzuschlag
- Expressversand

SZABO-SCANDIC HandelsgmbH

Quellenstraße 110, A-1100 Wien

T. +43(0)1 489 3961-0

F. +43(0)1 489 3961-7

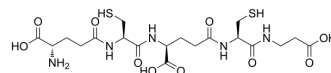
mail@szabo-scandic.com

www.szabo-scandic.com

[linkedin.com/company/szaboscandic](https://www.linkedin.com/company/szaboscandic) 

Homo-phytochelatin

Cat. No.:	HY-P10253
CAS No.:	118026-35-0
Molecular Formula:	C ₁₉ H ₃₁ N ₅ O ₁₀ S ₂
Molecular Weight:	553.61
Sequence:	{gamma-Glu}-Cys-{gamma-Glu}-Cys-{beta-Ala}
Sequence Shortening:	{gamma-Glu}-C-{gamma-Glu}-Cs-{beta-Ala}
Target:	Others
Pathway:	Others
Storage:	Please store the product under the recommended conditions in the Certificate of Analysis.



BIOLOGICAL ACTIVITY

Description	Homo-phytochelatin is heavy metal chelator presented in legumes ^[1] .
In Vitro	CSP-1 (10 μM, 30 min) produces cAMP and thus stimulates the calcitonin receptor in the cells, destorys actin ring in osteoclast and inactivate the multinucleated osteoclast, which inhibits the osteoclast formation ^[1] . MCE has not independently confirmed the accuracy of these methods. They are for reference only.

REFERENCES

[1]. Oven M, et al., Molecular characterization of the homo-phytochelatin synthase of soybean Glycine max: relation to phytochelatin synthase. J Biol Chem. 2002 Feb 15;277(7):4747-54.

Caution: Product has not been fully validated for medical applications. For research use only.

Tel: 609-228-6898

Fax: 609-228-5909

E-mail: tech@MedChemExpress.com

Address: 1 Deer Park Dr, Suite Q, Monmouth Junction, NJ 08852, USA