



# SZABO SCANDIC

Part of Europa Biosite

## Produktinformation



Forschungsprodukte & Biochemikalien



Zellkultur & Verbrauchsmaterial



Diagnostik & molekulare Diagnostik



Laborgeräte & Service

Weitere Information auf den folgenden Seiten!  
See the following pages for more information!



### Lieferung & Zahlungsart

siehe unsere [Liefer- und Versandbedingungen](#)

### Zuschläge

- Mindermengenzuschlag
- Trockeneiszuschlag
- Gefahrgutzuschlag
- Expressversand

### SZABO-SCANDIC HandelsgmbH

Quellenstraße 110, A-1100 Wien

T. +43(0)1 489 3961-0

F. +43(0)1 489 3961-7

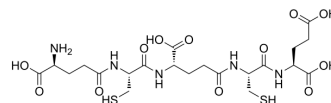
[mail@szabo-scandic.com](mailto:mail@szabo-scandic.com)

[www.szabo-scandic.com](http://www.szabo-scandic.com)

[linkedin.com/company/szaboscandic](https://www.linkedin.com/company/szaboscandic) 

## Iso-phytochelatin 2 (Glu)

Cat. No.:	HY-P10254
CAS No.:	162966-04-3
Molecular Formula:	C <sub>21</sub> H <sub>33</sub> N <sub>5</sub> O <sub>12</sub> S <sub>2</sub>
Molecular Weight:	611.64
Sequence:	{gamma-Glu}-C-{gamma-Glu}-CE
Sequence Shortening:	{gamma-Glu}-Cys-{gamma-Glu}-Cys-Glu
Target:	Others
Pathway:	Others
Storage:	Please store the product under the recommended conditions in the Certificate of Analysis.



### BIOLOGICAL ACTIVITY

#### Description

Iso-phytochelatin 2 Glu is chelating peptide with general structure (γ-Glu-Cys)<sub>n</sub>-Gly, which is induced by heavy metals in high plants and fungi<sup>[1]</sup>.

### REFERENCES

[1]. Ducruix C, et al., New insights into the regulation of phytochelatin biosynthesis in *A. thaliana* cells from metabolite profiling analyses. *Biochimie*. 2006 Nov;88(11):1733-42.

**Caution: Product has not been fully validated for medical applications. For research use only.**

Tel: 609-228-6898

Fax: 609-228-5909

E-mail: tech@MedChemExpress.com

Address: 1 Deer Park Dr, Suite Q, Monmouth Junction, NJ 08852, USA