



# SZABO SCANDIC

Part of Europa Biosite

## Produktinformation



Forschungsprodukte & Biochemikalien



Zellkultur & Verbrauchsmaterial



Diagnostik & molekulare Diagnostik



Laborgeräte & Service

Weitere Information auf den folgenden Seiten!  
See the following pages for more information!



### Lieferung & Zahlungsart

siehe unsere [Liefer- und Versandbedingungen](#)

### Zuschläge

- Mindermengenzuschlag
- Trockeneiszuschlag
- Gefahrgutzuschlag
- Expressversand

### SZABO-SCANDIC HandelsgmbH

Quellenstraße 110, A-1100 Wien

T. +43(0)1 489 3961-0

F. +43(0)1 489 3961-7

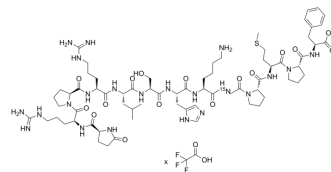
[mail@szabo-scandic.com](mailto:mail@szabo-scandic.com)

[www.szabo-scandic.com](http://www.szabo-scandic.com)

[linkedin.com/company/szaboscandic](https://www.linkedin.com/company/szaboscandic) 

## [Pyr1]-Apelin-13, Gly(15N) TFA

<b>Cat. No.:</b>	HY-P1033S
<b>Molecular Formula:</b>	C <sub>69</sub> H <sub>108</sub> N <sub>21</sub> <sup>15</sup> NO <sub>16</sub> S.xC <sub>2</sub> HF <sub>3</sub> O <sub>2</sub>
<b>Sequence:</b>	{Glp}-Arg-Pro-Arg-Leu-Ser-His-Lys--{Gly(15N)}-Pro-Met-Pro-Phe
<b>Sequence Shortening:</b>	{Glp}-RPRLSHK-{Gly(15N)}-PMPF
<b>Target:</b>	Apelin Receptor (APJ)
<b>Pathway:</b>	GPCR/G Protein
<b>Storage:</b>	Please store the product under the recommended conditions in the Certificate of Analysis.



### BIOLOGICAL ACTIVITY

<b>Description</b>	Pyr1]-Apelin-13, Gly(15N) TFA is a Gly <sup>15</sup> N labeled [Pyr1]-Apelin-13. [Pyr1]-Apelin-13 is a highly potent, selective endogenous apelin receptor agonist <sup>[1][2]</sup> .
--------------------	--

### REFERENCES

- [1]. Serpooshan V, et al. [Pyr1]-Apelin-13 delivery via nano-liposomal encapsulation attenuates pressure overload-induced cardiac dysfunction. *Biomaterials*. 2015 Jan;37:289-98.
- [2]. Hajimashhadi Z, et al. Chronic administration of [Pyr1] apelin-13 attenuates neuropathic pain after compression spinal cord injury in rats. *Neuropeptides*. 2017 Feb;61:15-22.

**Caution: Product has not been fully validated for medical applications. For research use only.**

Tel: 609-228-6898

Fax: 609-228-5909

E-mail: tech@MedChemExpress.com

Address: 1 Deer Park Dr, Suite Q, Monmouth Junction, NJ 08852, USA