



SZABO SCANDIC

Part of Europa Biosite

Produktinformation



Forschungsprodukte & Biochemikalien



Zellkultur & Verbrauchsmaterial



Diagnostik & molekulare Diagnostik



Laborgeräte & Service

Weitere Information auf den folgenden Seiten!
See the following pages for more information!



Lieferung & Zahlungsart

siehe unsere [Liefer- und Versandbedingungen](#)

Zuschläge

- Mindermengenzuschlag
- Trockeneiszuschlag
- Gefahrgutzuschlag
- Expressversand

SZABO-SCANDIC HandelsgmbH

Quellenstraße 110, A-1100 Wien

T. +43(0)1 489 3961-0

F. +43(0)1 489 3961-7

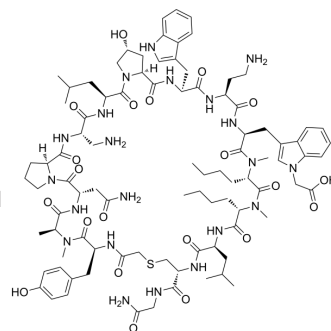
mail@szabo-scandic.com

www.szabo-scandic.com

[linkedin.com/company/szaboscandic](https://www.linkedin.com/company/szaboscandic) 

BMS-986189

Cat. No.:	HY-P10375
CAS No.:	1629665-96-8
Molecular Formula:	C ₉₁ H ₁₃₁ N ₂₁ O ₂₁ S
Molecular Weight:	1887.21
Sequence:	{Met}-Tyr-Ala-Asn-Pro-{Dpr}-Leu-{Hyp}-Trp-{Dab}-Trp-{Nle}-{Nle}-Leu-Cys-Gly (Disulfide bridge: Met1-Cys15)
Sequence Shortening:	{Met}-YANP-{Dpr}-L-{Hyp}-W-{Dab}-W-{Nle}-{Nle}-LCG (Disulfide bridge: Met1-Cys15)
Target:	PD-1/PD-L1
Pathway:	Immunology/Inflammation
Storage:	Sealed storage, away from moisture Powder -80°C 2 years -20°C 1 year * In solvent : -80°C, 6 months; -20°C, 1 month (sealed storage, away from moisture)



SOLVENT & SOLUBILITY

In Vitro

DMSO : ≥ 100 mg/mL (52.99 mM)
 * " \geq " means soluble, but saturation unknown.

Concentration	Solvent	Mass		
		1 mg	5 mg	10 mg
Preparing Stock Solutions	1 mM	0.5299 mL	2.6494 mL	5.2988 mL
	5 mM	0.1060 mL	0.5299 mL	1.0598 mL
	10 mM	0.0530 mL	0.2649 mL	0.5299 mL

Please refer to the solubility information to select the appropriate solvent.

BIOLOGICAL ACTIVITY

Description

BMS-986189 is a macrocyclic peptide inhibitor of PD-L1 (IC₅₀: 1.03 nM), and can be used for cancer research^[1].

REFERENCES

[1]. Yang J, et al. Utilization of macrocyclic peptides to target protein-protein interactions in cancer. *Front Oncol.* 2022 Nov 17;12:992171.

Caution: Product has not been fully validated for medical applications. For research use only.

Tel: 609-228-6898

Fax: 609-228-5909

E-mail: tech@MedChemExpress.com

Address: 1 Deer Park Dr, Suite Q, Monmouth Junction, NJ 08852, USA