



# SZABO SCANDIC

Part of Europa Biosite

## Produktinformation



Forschungsprodukte & Biochemikalien



Zellkultur & Verbrauchsmaterial



Diagnostik & molekulare Diagnostik



Laborgeräte & Service

Weitere Information auf den folgenden Seiten!  
See the following pages for more information!



### Lieferung & Zahlungsart

siehe unsere [Liefer- und Versandbedingungen](#)

### Zuschläge

- Mindermengenzuschlag
- Trockeneiszuschlag
- Gefahrgutzuschlag
- Expressversand

### SZABO-SCANDIC HandelsgmbH

Quellenstraße 110, A-1100 Wien

T. +43(0)1 489 3961-0

F. +43(0)1 489 3961-7

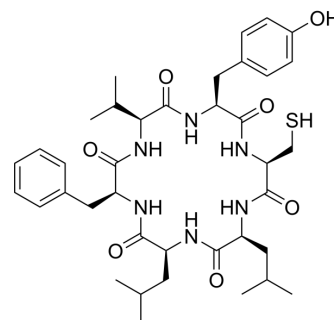
[mail@szabo-scandic.com](mailto:mail@szabo-scandic.com)

[www.szabo-scandic.com](http://www.szabo-scandic.com)

[linkedin.com/company/szaboscandic](https://www.linkedin.com/company/szaboscandic) 

## cyclo(CLIFVY)

Cat. No.:	HY-P10426
CAS No.:	1446322-73-1
Molecular Formula:	C <sub>38</sub> H <sub>54</sub> N <sub>6</sub> O <sub>7</sub> S
Molecular Weight:	738.94
Sequence:	cyclo(Cys-Leu-Leu-Phe-Val-Tyr)
Sequence Shortening:	cyclo(CLIFVY)
Target:	HIF/HIF Prolyl-Hydroxylase; VEGFR
Pathway:	Metabolic Enzyme/Protease; Protein Tyrosine Kinase/RTK
Storage:	Please store the product under the recommended conditions in the Certificate of Analysis.



### BIOLOGICAL ACTIVITY

#### Description

cyclo(CLIFVY) is an inhibitor for hypoxia inducible factor-1 (HIF-1), with IC<sub>50</sub> of 19 μM (in U2OS) and 16 μM (in MCF-7). cyclo(CLIFVY) binds to the PAS-B domain of HIF-1α, inhibits HIF-1 dimerization and transcriptional activity. cyclo(CLIFVY) downregulates the expression of hypoxia response genes, such as VEGF and CAIX, exhibits antitumor against the HIF-1 associated cancers<sup>[1]</sup>.

### REFERENCES

[1]. Miranda E, et al., A cyclic peptide inhibitor of HIF-1 heterodimerization that inhibits hypoxia signaling in cancer cells. J Am Chem Soc. 2013 Jul 17;135(28):10418-25.

**Caution: Product has not been fully validated for medical applications. For research use only.**

Tel: 609-228-6898

Fax: 609-228-5909

E-mail: tech@MedChemExpress.com

Address: 1 Deer Park Dr, Suite Q, Monmouth Junction, NJ 08852, USA