



# SZABO SCANDIC

Part of Europa Biosite

## Produktinformation



Forschungsprodukte & Biochemikalien



Zellkultur & Verbrauchsmaterial



Diagnostik & molekulare Diagnostik



Laborgeräte & Service

Weitere Information auf den folgenden Seiten!  
See the following pages for more information!



### Lieferung & Zahlungsart

siehe unsere [Liefer- und Versandbedingungen](#)

### Zuschläge

- Mindermengenzuschlag
- Trockeneiszuschlag
- Gefahrgutzuschlag
- Expressversand

### SZABO-SCANDIC HandelsgmbH

Quellenstraße 110, A-1100 Wien

T. +43(0)1 489 3961-0

F. +43(0)1 489 3961-7

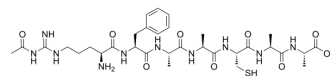
[mail@szabo-scandic.com](mailto:mail@szabo-scandic.com)

[www.szabo-scandic.com](http://www.szabo-scandic.com)

[linkedin.com/company/szaboscandic](https://www.linkedin.com/company/szaboscandic) 

## Cysteine peptide

Cat. No.:	HY-P10533
Molecular Formula:	C <sub>32</sub> H <sub>50</sub> N <sub>10</sub> O <sub>9</sub> S
Molecular Weight:	750.87
Sequence:	Ac-Arg-Phe-Ala-Ala-Cys-Ala-Ala
Sequence Shortening:	Ac-RFAACAA
Target:	Biochemical Assay Reagents
Pathway:	Others
Storage:	Please store the product under the recommended conditions in the Certificate of Analysis.



### BIOLOGICAL ACTIVITY

#### Description

Cysteine peptide is a heptapeptide containing a cysteine residue whose thiol group makes it susceptible to a range of oxidative modifications. Cysteine peptide is used to detect the skin sensitization potential of chemicals including cosmetic ingredients<sup>[1]</sup>.

### REFERENCES

[1]. Cho S A, et al. Method for detecting the reactivity of chemicals towards peptides as an alternative test method for assessing skin sensitization potential[J]. Toxicology letters, 2014, 225(1): 185-191.

**Caution: Product has not been fully validated for medical applications. For research use only.**

Tel: 609-228-6898

Fax: 609-228-5909

E-mail: tech@MedChemExpress.com

Address: 1 Deer Park Dr, Suite Q, Monmouth Junction, NJ 08852, USA