



# SZABO SCANDIC

Part of Europa Biosite

## Produktinformation



Forschungsprodukte & Biochemikalien



Zellkultur & Verbrauchsmaterial



Diagnostik & molekulare Diagnostik



Laborgeräte & Service

Weitere Information auf den folgenden Seiten!  
See the following pages for more information!



### Lieferung & Zahlungsart

siehe unsere [Liefer- und Versandbedingungen](#)

### Zuschläge

- Mindermengenzuschlag
- Trockeneiszuschlag
- Gefahrgutzuschlag
- Expressversand

### SZABO-SCANDIC HandelsgmbH

Quellenstraße 110, A-1100 Wien

T. +43(0)1 489 3961-0

F. +43(0)1 489 3961-7

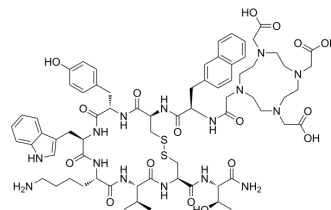
[mail@szabo-scandic.com](mailto:mail@szabo-scandic.com)

[www.szabo-scandic.com](http://www.szabo-scandic.com)

[linkedin.com/company/szaboscandic](https://www.linkedin.com/company/szaboscandic) 

## DOTA-Lanreotide

<b>Cat. No.:</b>	HY-P10730
<b>CAS No.:</b>	213187-44-1
<b>Molecular Formula:</b>	C <sub>70</sub> H <sub>95</sub> N <sub>15</sub> O <sub>17</sub> S <sub>2</sub>
<b>Molecular Weight:</b>	1482.72
<b>Sequence:</b>	{DOTA}-{d-2NaI}-Cys-Tyr-{d-Trp}-Lys-Val-Cys-Thr (disulfide bridge:Cys2-Cys7)
<b>Sequence Shortening:</b>	{DOTA}-{d-2NaI}-CY-{d-Trp}-KVCT-NH <sub>2</sub> (Disulfide bridge: Cys2-Cys7)
<b>Target:</b>	Others
<b>Pathway:</b>	Others
<b>Storage:</b>	Please store the product under the recommended conditions in the Certificate of Analysis.



### BIOLOGICAL ACTIVITY

#### Description

DOTA-Lanreotide is a radionuclide conjugate (RDC), which is capable of binding to a radionuclide. RDC has the ability to specifically target biomolecules and can be used in medical imaging or therapy<sup>[1]</sup>.

**Caution: Product has not been fully validated for medical applications. For research use only.**

Tel: 609-228-6898

Fax: 609-228-5909

E-mail: tech@MedChemExpress.com

Address: 1 Deer Park Dr, Suite Q, Monmouth Junction, NJ 08852, USA