



SZABO SCANDIC

Part of Europa Biosite

Produktinformation



Forschungsprodukte & Biochemikalien



Zellkultur & Verbrauchsmaterial



Diagnostik & molekulare Diagnostik



Laborgeräte & Service

Weitere Information auf den folgenden Seiten!
See the following pages for more information!



Lieferung & Zahlungsart

siehe unsere [Liefer- und Versandbedingungen](#)

Zuschläge

- Mindermengenzuschlag
- Trockeneiszuschlag
- Gefahrgutzuschlag
- Expressversand

SZABO-SCANDIC HandelsgmbH

Quellenstraße 110, A-1100 Wien

T. +43(0)1 489 3961-0

F. +43(0)1 489 3961-7

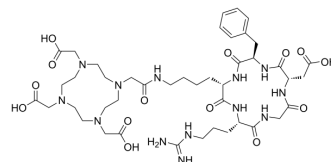
mail@szabo-scandic.com

www.szabo-scandic.com

[linkedin.com/company/szaboscandic](https://www.linkedin.com/company/szaboscandic) 

DOTA-cyclo(RGDfK)

Cat. No.: HY-P10732
CAS No.: 909024-55-1
Molecular Formula: C₄₃H₆₇N₁₃O₁₄
Molecular Weight: 990.07
Sequence: {DOTA}-Arg-Gly-Asp-{d-Phe}-Lys
Sequence Shortening: {DOTA}-RGD-{d-Phe}-K
Target: Others
Pathway: Others
Storage: Sealed storage, away from moisture
 Powder -80°C 2 years
 -20°C 1 year



* In solvent : -80°C, 6 months; -20°C, 1 month (sealed storage, away from moisture)

SOLVENT & SOLUBILITY

In Vitro

DMSO : 25 mg/mL (25.25 mM; Need ultrasonic)

Preparing Stock Solutions	Solvent		Mass		
	Concentration		1 mg	5 mg	10 mg
	1 mM		1.0100 mL	5.0501 mL	10.1003 mL
	5 mM		0.2020 mL	1.0100 mL	2.0201 mL
	10 mM		0.1010 mL	0.5050 mL	1.0100 mL

Please refer to the solubility information to select the appropriate solvent.

BIOLOGICAL ACTIVITY

Description

DOTA-cyclo(RGDfK) is a radionuclide conjugate (RDC), which is capable of binding to a radionuclide. RDC has the ability to specifically target biomolecules and can be used in medical imaging or therapy^[1].

Caution: Product has not been fully validated for medical applications. For research use only.

Tel: 609-228-6898

Fax: 609-228-5909

E-mail: tech@MedChemExpress.com

Address: 1 Deer Park Dr, Suite Q, Monmouth Junction, NJ 08852, USA