



# SZABO SCANDIC

Part of Europa Biosite

## Produktinformation



Forschungsprodukte & Biochemikalien



Zellkultur & Verbrauchsmaterial



Diagnostik & molekulare Diagnostik



Laborgeräte & Service

Weitere Information auf den folgenden Seiten!  
See the following pages for more information!



### Lieferung & Zahlungsart

siehe unsere [Liefer- und Versandbedingungen](#)

### Zuschläge

- Mindermengenzuschlag
- Trockeneiszuschlag
- Gefahrgutzuschlag
- Expressversand

### SZABO-SCANDIC HandelsgmbH

Quellenstraße 110, A-1100 Wien

T. +43(0)1 489 3961-0

F. +43(0)1 489 3961-7

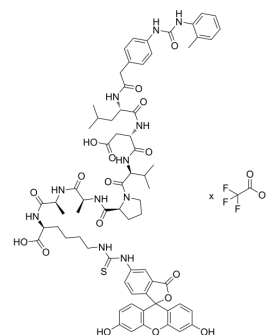
[mail@szabo-scandic.com](mailto:mail@szabo-scandic.com)

[www.szabo-scandic.com](http://www.szabo-scandic.com)

[linkedin.com/company/szaboscandic](https://www.linkedin.com/company/szaboscandic) 

## LDV-FITC TFA

<b>Cat. No.:</b>	HY-P1188A
<b>Molecular Formula:</b>	C <sub>69</sub> H <sub>81</sub> N <sub>11</sub> O <sub>17</sub> S.xC <sub>2</sub> HF <sub>3</sub> O <sub>2</sub>
<b>Sequence:</b>	{4-((N'-2-methylphenyl)ureido)-phenylacetyl}-Leu-Asp-Val-Pro-Ala-Ala-{Lys(FITC)}
<b>Sequence Shortening:</b>	{4-((N'-2-methylphenyl)ureido)-phenylacetyl}-LDVPAA-{Lys(FITC)}
<b>Target:</b>	Integrin
<b>Pathway:</b>	Cytoskeleton
<b>Storage:</b>	Please store the product under the recommended conditions in the Certificate of Analysis.



## BIOLOGICAL ACTIVITY

<b>Description</b>	LDV-FITC TFA, a fluorescent peptide, is a FITC-conjugated LDV peptide (HY-P2267). LDV-FITC TFA binds to the $\alpha 4\beta 1$ integrin with high affinity ( $K_d$ : 0.3 nM and 12 nM for binding to U937 cells in the presence and absence of $Mn^{2+}$ respectively). LDV-FITC TFA can be used to detect $\alpha 4\beta 1$ integrin affinity <sup>[1][2]</sup> .
<b>IC<sub>50</sub> &amp; Target</b>	$\alpha 4\beta 1$ integrin <sup>[1]</sup>

## REFERENCES

- [1]. Hyduk SJ, et al. Phospholipase C, calcium, and calmodulin are critical for alpha4beta1 integrin affinity up-regulation and monocyte arrest triggered by chemoattractants. *Blood*. 2007 Jan 1;109(1):176-84.
- [2]. Chigaev A, et al. Real time analysis of the affinity regulation of alpha 4-integrin. The physiologically activated receptor is intermediate in affinity between resting and  $Mn^{2+}$  or antibody activation. *J Biol Chem*. 2001 Dec 28;276(52):48670-8.

**Caution: Product has not been fully validated for medical applications. For research use only.**

Tel: 609-228-6898

Fax: 609-228-5909

E-mail: tech@MedChemExpress.com

Address: 1 Deer Park Dr, Suite Q, Monmouth Junction, NJ 08852, USA