



SZABO SCANDIC

Part of Europa Biosite

Produktinformation



Forschungsprodukte & Biochemikalien



Zellkultur & Verbrauchsmaterial



Diagnostik & molekulare Diagnostik



Laborgeräte & Service

Weitere Information auf den folgenden Seiten!
See the following pages for more information!



Lieferung & Zahlungsart

siehe unsere [Liefer- und Versandbedingungen](#)

Zuschläge

- Mindermengenzuschlag
- Trockeneiszuschlag
- Gefahrgutzuschlag
- Expressversand

SZABO-SCANDIC HandelsgmbH

Quellenstraße 110, A-1100 Wien

T. +43(0)1 489 3961-0

F. +43(0)1 489 3961-7

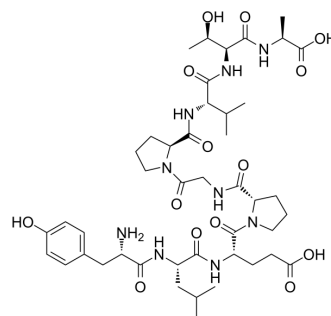
mail@szabo-scandic.com

www.szabo-scandic.com

[linkedin.com/company/szaboscandic](https://www.linkedin.com/company/szaboscandic) 

G280-9

Cat. No.: HY-P1794
CAS No.: 156761-76-1
Molecular Formula: C₄₄H₆₇N₉O₁₄
Molecular Weight: 946.05
Sequence: Tyr-Leu-Glu-Pro-Gly-Pro-Val-Thr-Ala
Sequence Shortening: YLEPGPVTA
Target: Others
Pathway: Others
Storage: Sealed storage, away from moisture



Powder -80°C 2 years
 -20°C 1 year

* In solvent : -80°C, 6 months; -20°C, 1 month (sealed storage, away from moisture)

SOLVENT & SOLUBILITY

In Vitro

H₂O : 50 mg/mL (52.85 mM; Need ultrasonic)

Preparing Stock Solutions	Solvent Concentration	Mass		
		1 mg	5 mg	10 mg
	1 mM	1.0570 mL	5.2851 mL	10.5703 mL
	5 mM	0.2114 mL	1.0570 mL	2.1141 mL
	10 mM	0.1057 mL	0.5285 mL	1.0570 mL

Please refer to the solubility information to select the appropriate solvent.

BIOLOGICAL ACTIVITY

Description

G280-9 is a 9 amino acid native epitope peptide. G280-9 is a relevant target expressed on melanoma.

REFERENCES

[1]. Pass HA, et al. Immunization of patients with melanoma peptide vaccines: immunologic assessment using the ELISPOT assay. Cancer J Sci Am. 1998 Sep-Oct;4(5):316-23.

Caution: Product has not been fully validated for medical applications. For research use only.

Tel: 609-228-6898

Fax: 609-228-5909

E-mail: tech@MedChemExpress.com

Address: 1 Deer Park Dr, Suite Q, Monmouth Junction, NJ 08852, USA