



SZABO SCANDIC

Part of Europa Biosite

Produktinformation



Forschungsprodukte & Biochemikalien



Zellkultur & Verbrauchsmaterial



Diagnostik & molekulare Diagnostik



Laborgeräte & Service

Weitere Information auf den folgenden Seiten!
See the following pages for more information!



Lieferung & Zahlungsart

siehe unsere [Liefer- und Versandbedingungen](#)

Zuschläge

- Mindermengenzuschlag
- Trockeneiszuschlag
- Gefahrgutzuschlag
- Expressversand

SZABO-SCANDIC HandelsgmbH

Quellenstraße 110, A-1100 Wien

T. +43(0)1 489 3961-0

F. +43(0)1 489 3961-7

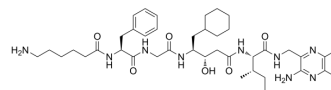
mail@szabo-scandic.com

www.szabo-scandic.com

[linkedin.com/company/szaboscandic](https://www.linkedin.com/company/szaboscandic) 

EMD 55068

Cat. No.:	HY-P2075
CAS No.:	126784-34-7
Molecular Formula:	C ₄₁ H ₆₅ N ₉ O ₆
Molecular Weight:	780.01
Sequence:	{Oaa}-Phe-Gly- $\{\gamma$ -amino- β -hydroxycyclohexanepentanoic acid}-Ile
Sequence Shortening:	{Oaa}-FG- $\{\gamma$ -amino- β -hydroxycyclohexanepentanoic acid}-I
Target:	Renin
Pathway:	Metabolic Enzyme/Protease
Storage:	Please store the product under the recommended conditions in the Certificate of Analysis.



BIOLOGICAL ACTIVITY

Description	EMD 55068 is a renin antagonist. EMD 55068 inhibits the uptake of taurocholate ^[1] .
-------------	---

REFERENCES

[1]. Ziegler K, et al. Binding proteins for linear renin-inhibiting peptides in basolateral plasma membranes of rat liver. *Biochim Biophys Acta*. 1992 Jan 31;1103(2):219-28.

Caution: Product has not been fully validated for medical applications. For research use only.

Tel: 609-228-6898

Fax: 609-228-5909

E-mail: tech@MedChemExpress.com

Address: 1 Deer Park Dr, Suite Q, Monmouth Junction, NJ 08852, USA