



# SZABO SCANDIC

Part of Europa Biosite

## Produktinformation



Forschungsprodukte & Biochemikalien



Zellkultur & Verbrauchsmaterial



Diagnostik & molekulare Diagnostik



Laborgeräte & Service

Weitere Information auf den folgenden Seiten!  
See the following pages for more information!



### Lieferung & Zahlungsart

siehe unsere [Liefer- und Versandbedingungen](#)

### Zuschläge

- Mindermengenzuschlag
- Trockeneiszuschlag
- Gefahrgutzuschlag
- Expressversand

### SZABO-SCANDIC HandelsgmbH

Quellenstraße 110, A-1100 Wien

T. +43(0)1 489 3961-0

F. +43(0)1 489 3961-7

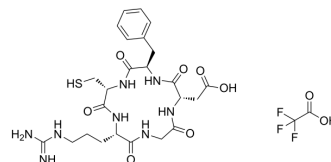
[mail@szabo-scandic.com](mailto:mail@szabo-scandic.com)

[www.szabo-scandic.com](http://www.szabo-scandic.com)

[linkedin.com/company/szaboscandic](https://www.linkedin.com/company/szaboscandic) 

## Cyclo(Arg-Gly-Asp-D-Phe-Cys) TFA

<b>Cat. No.:</b>	HY-P2300A
<b>Molecular Formula:</b>	C <sub>26</sub> H <sub>35</sub> F <sub>3</sub> N <sub>8</sub> O <sub>9</sub> S
<b>Molecular Weight:</b>	692.66
<b>Target:</b>	Integrin
<b>Pathway:</b>	Cytoskeleton
<b>Storage:</b>	Sealed storage, away from moisture and light, under nitrogen
	Powder    -80°C    2 years
	-20°C    1 year



\* In solvent : -80°C, 6 months; -20°C, 1 month (sealed storage, away from moisture and light, under nitrogen)

### SOLVENT & SOLUBILITY

#### In Vitro

H<sub>2</sub>O : 5 mg/mL (7.22 mM; Need ultrasonic)

Concentration	Solvent	Mass	1 mg	5 mg	10 mg
			1 mg	5 mg	10 mg
Preparing Stock Solutions	1 mM		1.4437 mL	7.2185 mL	14.4371 mL
	5 mM		0.2887 mL	1.4437 mL	2.8874 mL
	10 mM		---	---	---

Please refer to the solubility information to select the appropriate solvent.

### BIOLOGICAL ACTIVITY

#### Description

Cyclo(Arg-Gly-Asp-D-Phe-Cys) (Cyclo RGDfC) TFA, a cyclic RGD peptide which has high affinity to  $\alpha v \beta 3$ , can disrupt cell integrin interactions. Cyclo(Arg-Gly-Asp-D-Phe-Cys) TFA inhibits pluripotent marker expression in embryonic stem cells (ESCs) and the tumorigenic potential of mESCs in vivo. Cyclo(Arg-Gly-Asp-D-Phe-Cys) TFA can be used in the research of tumors<sup>[1]</sup>.

#### IC<sub>50</sub> & Target

$\alpha v \beta 3$

#### In Vitro

Cyclo(Arg-Gly-Asp-D-Phe-Cys) TFA (0.5 mM; 24 h) down-regulates the transcription factors Oct 4, Sox 2 and Nanog of mESCs<sup>[1]</sup>.  
 Cyclo(Arg-Gly-Asp-D-Phe-Cys) TFA (0.5 mM) inhibits integrin gene expression mESC-col I (type I collagen) constructs<sup>[1]</sup>.  
 Cyclo(Arg-Gly-Asp-D-Phe-Cys) TFA (0.5 mM)-treated mESC leads to the formation of aggregates and detachment from the surface<sup>[1]</sup>.  
 MCE has not independently confirmed the accuracy of these methods. They are for reference only.

#### In Vivo

Cyclo(Arg-Gly-Asp-D-Phe-Cys) TFA (0.5 mM, 24 h)-treated mESCs in the presence/absence of Leukemia inhibitory factor (LIF)

---

(injected in both thighs) generated teratomas in severe combined immunodeficiency (SCID) mice, which indicates that the process of mESC tumor formation in vivo is dependent on integrin interaction<sup>[1]</sup>.  
MCE has not independently confirmed the accuracy of these methods. They are for reference only.

## REFERENCES

---

[1]. Hazenbiller O, et al. Reduction of pluripotent gene expression in murine embryonic stem cells exposed to mechanical loading or Cyclo RGD peptide. BMC Cell Biol. 2017 Nov 14;18(1):32.

---

**Caution: Product has not been fully validated for medical applications. For research use only.**

Tel: 609-228-6898

Fax: 609-228-5909

E-mail: [tech@MedChemExpress.com](mailto:tech@MedChemExpress.com)

Address: 1 Deer Park Dr, Suite Q, Monmouth Junction, NJ 08852, USA