



SZABO SCANDIC

Part of Europa Biosite

Produktinformation



Forschungsprodukte & Biochemikalien



Zellkultur & Verbrauchsmaterial



Diagnostik & molekulare Diagnostik



Laborgeräte & Service

Weitere Information auf den folgenden Seiten!
See the following pages for more information!



Lieferung & Zahlungsart

siehe unsere [Liefer- und Versandbedingungen](#)

Zuschläge

- Mindermengenzuschlag
- Trockeneiszuschlag
- Gefahrgutzuschlag
- Expressversand

SZABO-SCANDIC HandelsgmbH

Quellenstraße 110, A-1100 Wien

T. +43(0)1 489 3961-0

F. +43(0)1 489 3961-7

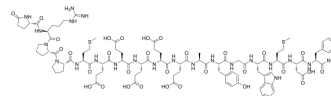
mail@szabo-scandic.com

www.szabo-scandic.com

[linkedin.com/company/szaboscandic](https://www.linkedin.com/company/szaboscandic) 

Gastrin I, rat

Cat. No.: HY-P2416
CAS No.: 81123-06-0
Molecular Formula: C₉₄H₁₂₈N₂₂O₃₁S₂
Molecular Weight: 2126.28
Sequence: Pyr-Arg-Pro-Pro-Met-Glu-Glu-Glu-Glu-Ala-Tyr-Gly-Trp-Met-Asp-Phe-NH₂
Sequence Shortening: Pyr-RPPMEEEEAYGWMDF-NH₂
Target: Cholecystokinin Receptor
Pathway: GPCR/G Protein; Neuronal Signaling
Storage: Sealed storage, away from moisture and light, under nitrogen



Powder -80°C 2 years
 -20°C 1 year
 * In solvent : -80°C, 6 months; -20°C, 1 month (sealed storage, away from moisture and light, under nitrogen)

SOLVENT & SOLUBILITY

In Vitro

DMSO : ≥ 27.5 mg/mL (12.93 mM)
 * "≥" means soluble, but saturation unknown.

Preparing Stock Solutions	Solvent Concentration	Mass		
		1 mg	5 mg	10 mg
	1 mM	0.4703 mL	2.3515 mL	4.7030 mL
	5 mM	0.0941 mL	0.4703 mL	0.9406 mL
	10 mM	0.0470 mL	0.2352 mL	0.4703 mL

Please refer to the solubility information to select the appropriate solvent.

BIOLOGICAL ACTIVITY

Description

Gastrin I, rat (Rat Gastrin-17) is a peptide hormone, can stimulate gastric acid secretion potently^[1].

REFERENCES

[1]. Coppins J, et, al. The production and role of gastrin-17 and gastrin-17-gly in gastrointestinal cancers. Protein Pept Lett. 2009; 16(12): 1504-18.

Caution: Product has not been fully validated for medical applications. For research use only.

Tel: 609-228-6898

Fax: 609-228-5909

E-mail: tech@MedChemExpress.com

Address: 1 Deer Park Dr, Suite Q, Monmouth Junction, NJ 08852, USA